

Overview and Scrutiny Committee

Agenda and Reports

For consideration on

Tuesday, 1st December 2009

In Committee Room 1, Town Hall, Chorley

At 6.30 pm



PROCEDURE FOR PUBLIC QUESTIONS/SPEAKING AT OVERVIEW AND SCRUTINY MEETINGS

- Questions must be submitted to the Democratic Services Section by no later than midday, two working days before the day of the meeting to allow time to prepare appropriate responses and investigate issues if necessary.
- A maximum period of 3 minutes will be allowed for a question from a member of the public on an item on the agenda. A maximum period of 30 minutes to be allocated for public questions if necessary at each meeting of the Overview and Scrutiny Committee. This will provide an opportunity for members of the public to raise and ask questions on any issue falling within the remit of the Committee.

20 November 2009

Dear Councillor

OVERVIEW AND SCRUTINY COMMITTEE - TUESDAY, 1ST DECEMBER 2009

You are invited to attend a meeting of the Overview and Scrutiny Committee to be held in Committee Room 1, Town Hall, Chorley on Tuesday, 1st December 2009 commencing at 6.30 pm.

AGENDA

1. **Apologies for absence**

2. **Minutes (Pages 1 - 6)**

To confirm as a correct record the enclosed minutes of the meeting of the Overview and Scrutiny Committee held on 9 November 2009.

3. **Declarations of Any Interests**

Members are reminded of their responsibility to declare any personal interest in respect of matters contained in this agenda. If the interest arises **only** as result of your membership of another public body or one to which you have been appointed by the Council then you only need to declare it if you intend to speak.

If the personal interest is a prejudicial interest, you must withdraw from the meeting. Normally you should leave the room before the business starts to be discussed. You do, however, have the same right to speak as a member of the public and may remain in the room to enable you to exercise that right and then leave immediately. In either case you must not seek to improperly influence a decision on the matter.

4. **Public Questions**

Members of the public who have requested the opportunity to ask a question(s) on an item on the agenda will be asked to put their question(s) to the Committee. Each member of the public will be allowed to ask one supplementary question within his/her allocated 3 minutes.

5. **Crime and Disorder Reduction Partnerships - Government Information Sheet (Pages 7 - 8)**

To consider and receive the enclosed summary of the Government Information Sheet, previously sent to Members electronically. The summary has been prepared by Paul Lowe, Merged Crime and Disorder Reduction Manager.

6. **Draft protocol for scrutiny (Pages 9 - 14)**

To consider and receive the enclosed draft protocol outlining the aims, objectives and roles for the scrutiny of crime and disorder.

7. **Safer Chorley and South Ribble Partnership (Pages 15 - 16)**

To receive and consider the enclosed report of the Corporate Director (Neighbourhoods).

a) Strategic Assessment Plan (Pages 17 - 46)

b) Progress report (Pages 47 - 56)

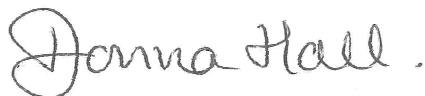
c) Performance Information (Pages 57 - 60)

8. **Future agenda items (Pages 61 - 68)**

To consider the Overview and Scrutiny Work Plan and the Council's Forward Plan for the four month period 1 December 2009 to 31 March 2010 (documents enclosed).

9. **Any other item(s) the Chair decides is/are urgent**

Yours sincerely



Donna Hall
Chief Executive

Ruth Rimmington
Democratic and Member Services Officer
E-mail: ruth.rimmington@chorley.gov.uk
Tel: (01257) 515118
Fax: (01257) 515150

Distribution

1. Agenda and reports to all Members of the Overview and Scrutiny Committee (Councillor Dennis Edgerley (Chair), Councillor Alan Cullens (Vice-Chair) and Councillors Nora Ball, Mike Devaney, Marie Gray, Harold Heaton, Adrian Lowe, Rosie Russell, Edward Smith, Iris Smith, Joyce Snape and Peter Wilson for attendance.
2. Agenda and reports to Donna Hall (Chief Executive), Carol Russell (Head of Democratic Services), Simon Clark (Service Manager - Environment), Paul Lowe (Merged Crime and Disorder Reduction Manager) and Ruth Rimmington (Democratic and Member Services Officer) for attendance.
3. Agenda and reports to Councillor Eric Bell (Executive Member (Neighbourhoods)) and Stuart Williams (Chief Superintendent Lancashire Constabulary) for attendance.

**This information can be made available to you in larger print
or on audio tape, or translated into your own language.
Please telephone 01257 515118 to access this service.**

આ માહિતીનો અનુવાદ આપની પોતાની ભાષામાં કરી શકાય છે. આ સેવા સરળતાથી મેળવવા
માટે કૃપા કરી, આ નંબર પર ફોન કરો: 01257 515822 01257 515823

ان معلومات کا ترجمہ آپ کی اپنی زبان میں بھی کیا جاسکتا ہے۔ یہ خدمت استعمال کرنے کیلئے براہ مہربانی اس نمبر پر ٹیلیفون
کیجئے:

This page is intentionally left blank

Overview and Scrutiny Committee

Monday, 9 November 2009

Present: Councillor Dennis Edgerley (Chair), Councillor Alan Cullens (Vice-Chair) and Councillors Mike Devaney, Marie Gray, Harold Heaton, Adrian Lowe, Rosie Russell, Edward Smith, Iris Smith and Peter Wilson

Also in attendance: Councillors Peter Malpas (Executive Member (Business))

Officers in attendance: Gary Hall (Assistant Chief Executive (Business Transformation)), Lesley-Ann Fenton (Assistant Chief Executive (Policy and Performance)), Jamie Carson (Corporate Director (People)), Jane Meek (Corporate Director (Business)), Ishbel Murray (Corporate Director (Neighbourhoods)), Zoe Whiteside (Strategic Housing Services Manager), Carol Russell (Head of Democratic Services) and Ruth Rimmington (Democratic and Member Services Officer)

09.OS.84 APOLOGIES FOR ABSENCE

Apologies for absence were submitted on behalf of Councillors Nora Ball and Joyce Snape.

09.OS.85 MINUTES

RESOLVED – The minutes of the meeting of the Overview and Scrutiny Committee held on 28 September 2009 be confirmed as a correct record and signed by the Chair.

09.OS.86 DECLARATIONS OF ANY INTERESTS

In accordance with the provisions of the Local Government Act 2000, the Council's Constitution and the Members Code of Conduct the following interests were declared:

- Councillor Adrian Lowe declared a personal interest in item 9: Chorley Partnership's Performance Report - Second Quarter 2009 / 2010 and item 10: Performance of Key Partnerships - 2008/09 Year End Progress report.
- Councillor Alan Cullens declared a personal interest in item 10: Performance of Key Partnerships - 2008/09 Year End Progress report.

09.OS.87 PUBLIC QUESTIONS

No members of the public requested to ask a question at the meeting.

09.OS.88 OVERVIEW AND SCRUTINY INQUIRIES - AFFORDABLE HOUSING

The Chair welcomed Councillor Peter Malpas (Executive Member (Business)) to the meeting.

Members received and considered the final report, recommendations and action plan in respect of the Joint Overview and Scrutiny Task Group inquiry with Preston and South Ribble into Affordable Housing.

The Chair advised there were useful recommendations within the report that, in some cases, the Executive Cabinet had already implemented as part of the Affordable Housing action plan. Councillor Malpas supported the recommendations, in particular, those made to the Homes and Communities Agency.

The inquiry had been a learning experience with regards to joint scrutiny.

RESOLVED - The report be presented to Executive Cabinet for consideration in December 2009.

09.OS.89 EXECUTIVE CABINET - 3 DECEMBER 2009

The Chair reported that there had been no requests from Committee Members to consider reports on the Executive Cabinet agenda for the meeting on 3 December 2009.

09.OS.90 BUSINESS PLAN AND PERFORMANCE MONITORING STATEMENTS - SECOND QUARTER 2009 / 2010

The Committee received the Business Plan and Performance Monitoring Statements.

(a) Business Directorate

The Corporate Director (Business) reported progress against the key actions and performance indicators.

It was reported the new ASDA development would aim to employ 440 staff, with 40% of these being full time equivalents.

In response to a query it was clarified that a total of 43 Disabled Facilities Grants had been received, with only 5 awaiting approval. Of the £354,000 budget £315,000 had been committed.

With regards to the Abbey Village and Brindle Conservation Area Reviews this would include the history, boundaries of the area, full consultation and an exhibition held in the area.

RESOLVED – The report be noted.

(b) Neighbourhoods Directorate

The Corporate Director (Neighbourhoods) reported progress against the key actions and performance indicators.

38 families who had been involved with the Families First project so far, with 25 active families currently. The route to the project was primarily Registered Social Landlords because of antisocial behaviour in children, drug and alcohol misuse, parenting / educational issues and financial issues.

At the Withnell Fold Memorial garden project Groundwork had successfully applied to the Chorley Partnership for a grant of £2,300 and the Council contributed a further £700. In addition to providing the plants for the volunteer day the Groundwork Green Team undertook some work in the garden to repair damaged footpaths, improve drainage and landscape features. Hillside Methodist Youth Club volunteers also worked with Withnell Fold Residents Association on the planting up of the garden for autumn and there were over 20 volunteers involved.

RESOLVED - The report be noted.

(c) People Directorate

The Corporate Director (People) reported progress against the key actions and performance indicators.

It was recognised that there had been delays for customers contacting the contact centre at the beginning of the year. An action plan had been prepared to turn the situation around and in recent weeks performance had been brought to an acceptable

level. 20% of enquiries were dealt at the first point of contact on the telephone with 85% dealt at the first point of contact when visiting the One Stop Shop.

Positive feedback had been received by Members regarding the newly reopened Pets Corner in Astley Park.

RESOLVED -

1. **An allotments action plan would be produced by the next quarter, including community growing schemes,**
2. **An update report on free swimming would be presented to a future meeting,**
3. **The report be noted.**

(d) Business Transformation Directorate

The Assistant Chief Executive (Business Transformation) reported progress against the key actions and performance indicators.

There had been a dip in performance for the revenues and benefits section – this was due to an increased demand, but would be addressed by an additional member of staff. The number of claims outstanding had reduced.

It was noted that some of the outstanding debtors were other Local Authorities.

RESOLVED - The report be noted.

Councillor Devaney left the meeting at 7.10pm.

(e) Policy and Performance Directorate

The Assistant Chief Executive (Policy and Performance) reported progress against the key actions and performance indicators.

The third edition of the Chorley Smile magazine had been produced. In addition, the first on-line version of the Chorley Smile magazine was produced which was now available through the Council's website. In the first two weeks of October there had been 1500 hits on the magazine page and 150 people had downloaded the magazine.

Working with LCC the second Locality Plan for Chorley had been finalised which was approved by both the District Council and County Council Cabinets in September. Over the next 12 months the Directorate working with LCC's District Partnership Officer would monitor the delivery of the joint action plan. In addition, work had commenced with the PCT and LCC to develop a Health Locality Plan with joint actions to improve health outcomes in Chorley (linked to the recently approved Health Inequalities Strategy) by identifying opportunities to work together to address key health issues such as alcohol related harm.

RESOLVED - The report be noted.

09.OS.91 PERFORMANCE MONITORING REPORT - SECOND QUARTER 2009 / 2010

The Assistant Chief Executive (Policy and Performance) presented the report setting out performance against the Corporate Strategy and the Council's National Indicators for the second quarter of 2009/10.

The Corporate Strategy 2008/9 identified 36 key projects. The overall performance of the key projects was excellent with 34 (94%) being either completed or rated 'green' and progressing ahead of or according to plan by the end of September 2009. This exceeded the Council's target of 90%.

20 of the key projects had been completed, while fourteen projects were rated as 'green', meaning that they were on track. Two projects were rated 'amber', and no projects were rated 'red'.

At the end of the 2nd quarter, 15 national indicators could be reported. All of these indicators had targets set and had been reported previously. Of the 15 the majority (13) had matched or exceeded target and 2 had missed target by 5% or more. Action plans were included for those indicators where performance was lower than anticipated.

RESOLVED - The report be noted.

09.OS.92 CHORLEY PARTNERSHIP'S PERFORMANCE REPORT - SECOND QUARTER 2009 / 2010

The Assistant Chief Executive (Policy and Performance) presented the report which updated Members on the progress of the Local Strategic Partnership in the second quarter of 2009/10.

Crime was up, on average, by 5.4% on this time last year, despite performing well against the LAA targets. There had been an overall increase in fraud and acquisitive crime compared to this time last year. Numbers of primary fires in Chorley had fallen.

All of the Chorley Partnership's projects for 2009/10 were now underway and on track.

RESOLVED -

1. **An article be prepared for intheknow outlining figures for unemployment and job seekers allowance for each ward.**
2. **The report be noted.**

09.OS.93 PERFORMANCE OF KEY PARTNERSHIPS - 2008/09 YEAR END PROGRESS REPORT

The Committee received a report that had previously been presented to the Executive Cabinet in June 2009. One of the topics raised at the "review of the year" event in March had been "Outsourcing and the effectiveness of subcontractors". The purpose of this item was to determine how the Committee would like to go forward on this issue.

Members discussed the presentation of the report and identified several additional areas they would like to receive information.

RESOLVED – A report be presented to a future meeting outlining areas of performance of key partnerships that Members may wish to scrutinise in detail, such as customer satisfaction and performance indicator information.

09.OS.94 EXECUTIVE'S RESPONSE TO OVERVIEW AND SCRUTINY INQUIRY INTO CHORLEY LOCAL STRATEGIC PARTNERSHIP

The Committee noted the Executive's response to the Overview and Scrutiny Inquiry into the Chorley Local Strategic Partnership.

Members were invited to make any requests for further information in relation to the Local Strategic Partnership to Lesley-Ann Fenton (lesley-ann.fenton@chorley.gov.uk).

Of the nine LSP projects funded for 2009/10, two were funding diversionary activity for young people at risk of alcohol abuse or Anti Social Behaviour and seeking to raise the self-esteem and aspirations of these young people.

The Safer Chorley and South Ribble Partnership had formally supported progress to be made on the establishment of a Designated Public Place Order for the Town Centre, Chorley and Astley Park. A report would be presented to Executive Cabinet which would outline the process and seek approval to go forward.

RESOLVED -

- 1. Further information be forwarded to the ward Councillors for Chorley North East and Chorley North West regarding a potential hotspot for alcohol misuse.**
- 2. The report be welcomed and noted.**

7.50 Councillor Rosie Russell left the meeting.

09.OS.95 FUTURE AGENDA ITEMS

The Committee noted that the date of the next meeting had changed from Monday, 30 November 2009 to Tuesday, 1 December 2009. The main item on the agenda for the next meeting would be crime and disorder.

RESOLVED - The work programme and Forward Plan be noted.

09.OS.96 REPORTS FROM THE TASK AND FINISH GROUPS

Highways Issues Task and Finish Group

The Democratic and Member Services Officer reported that the Group would be considering the draft final report at their next meeting. The final report would be presented to the Overview and Scrutiny Committee in January.

Town Centre Vitality Task and Finish Group

Councillor Peter Wilson reported that the group had considered issues relating to leisure and culture and signage into the town centre, including car parks. The following meeting would discuss vacant floor space and the markets.

Potential new review

The Chair requested Members to consider any issues they would like to be the subject of a scrutiny inquiry in the New Year.

RESOLVED - To note the update reports.

Chair

This page is intentionally left blank

Crime and disorder Reduction partnerships overview

Crime and Disorder Reduction Partnerships are statutory bodies in which “responsible authorities” have a duty to work with other local agencies to tackle crime and disorder. “Responsible authorities” are the police; police authorities; local authorities; fire and rescue authorities; and Primary Care Trusts. There is a provision in the current Policing and Crime Bill to add probation authorities to this list.

CDRPs in the enactment of their duties are mandated to cooperate with a number of other bodies including but not limited to social housing providers and schools. Where relevant and applicable CDRPs will also invite representatives from a very wide range of prescribed organisations to participate in the exercise of their functions including but not limited to, the crown prosecution service, the VCFS sector and the environment agency.

What do CDRPs do?

Fundamentally, CDRPs are there to work together to formulate and implement strategies in order to reduce crime and disorder in their areas.

Statutory functions

The Crime and Disorder Act 1998, as amended, requires responsible authorities to formulate and implement strategies for:

- The reduction of crime and disorder in the area (including anti-social and other behaviour adversely affecting the local environment); and
- Combating the misuse of drugs, alcohol and other substances in the area.

There have been changes to the statutory functions of CDRPs as a result of a 2004-05 review. Under the original legislation, CDRPs had to conduct three yearly audits of crime and disorder in the area, and to make reports as required (annually) to the Secretary of State on their work. The Police and Justice Act 2006 repealed these requirements, but regulations under the Act introduced statutory minimum requirements for partnership working, based on what the Government refers to as “six hallmarks of effective practice”. These are:

- Empowered and Effective Leadership;
- Visible and Constructive Accountability;
- Intelligence-led Business Processes;
- Effective and Responsive Delivery Structures;
- Engaged Communities; and
- Appropriate Skills and Knowledge²⁰

The regulations came into force on 1 August 2007 in England and 19 November 2007 in Wales. They set out a number of obligations on the responsible authorities in CDRPs.

- To convene a strategy group comprising all responsible authorities in the CDRP/CSP and others as they choose;
- To prepare a strategic assessment (document identifying the crime and community safety priorities in the area through analysis of information provided by partner agencies and the community);

- To produce a partnership plan (which lays out their approach for addressing those priorities);
- To meet minimum standards of community consultation and engagement on issues of crime and disorder and substance misuse;
- To ensure that each CDRP/CSP has an information sharing protocol in place and that each responsible authority has a designated information sharing liaison officer to promote and facilitate information sharing.

Funding

In addition to the monies responsible authorities commit to the delivery of the crime and disorder agenda Chorley and South Ribble Pilot merged CDRP benefit from several grant-funding pots. Grant monies include area based grant funding which are allocated via Lancashire county council, Basic command unit monies from Lancashire Police and a small grant contribution from Lancashire Police authority.

Scrutiny

The Police and Justice Act 2006 require every local authority to have a Crime and Disorder Overview and Scrutiny Committee (OSC), again with the power to review and scrutinise and make reports or recommendations regarding the functioning of the responsible authorities of the local CDRP/CSP. The Act also provides now for a "Councillor Call for Action", which gives councillors a formal mechanism for raising issues of local concern with the relevant OSC in their local authority area. The provisions came into force in England on 30 April 2009

Forthcoming changes

Reducing re-offending is an increasing priority for CDRPs and Local Strategic Partnerships (LSPs), which are the focal point to bringing together and coordinating the actions of housing, health services, local authorities and other key players to help resettle and rehabilitate offenders. In order to encourage and formalise this work, we propose making two changes to CDRPs:

- Add, by statute, probation trusts to the list of 'responsible authorities'. Currently police, police authorities, local authorities, fire and rescue authorities and primary care trusts are responsible authorities, whereas probation is defined as a 'co operating body'.
- And expand the statutory duties of CDRPs to include reducing re-offending.

The Policing and Crime Bill contains provisions to probation authorities to the list of "responsible authorities" that comprise Crime and Disorder Reduction Partnerships (in England) and extending the remit of these partnerships to explicitly include the reduction of re-offending.



Report of	Meeting	Date
Corporate Director (Governance)	Overview and Scrutiny Committee	1 December 2009

DRAFT PROTOCOL

PURPOSE OF REPORT

1. To consider the draft protocol for the Scrutiny of crime and disorder within Chorley.

RECOMMENDATION(S)

2. To make any amendments Members would like to the protocol and accept it.
3. To request the Chorley and South Ribble partnership (Responsible Authorities Group) to consider and accept the protocol.

CORPORATE PRIORITIES

4. This report relates to the following Strategic Objectives:

Put Chorley at the heart of regional economic development in the Central Lancashire sub-region		Develop local solutions to climate change.	
Improving equality of opportunity and life chances		Develop the Character and feel of Chorley as a good place to live	√
Involving people in their communities	√	Ensure Chorley Borough Council is a performing organization	

CRIME AND DISORDER REDUCTION PARTNERSHIP

5. The Police and Justice Act 2006, as amended by the Local Government and Public Involvement in Health Act 2007, requires every local authority to have a crime and disorder committee with the power to scrutinise the arrangement for preparing and implementing the crime and disorder strategy. The committee must also have the power to scrutinise local crime and disorder matters. This Council decided in July 2009 that the function of scrutiny crime and disorder matters would be undertaken by the Overview and Scrutiny Committee.
6. The protocol sets out the mutual expectations of scrutiny members and the Responsible Authorities Group in relation to the community safety scrutiny process. It aims to ensure that good relationships between the scrutiny members and Responsible Authorities Group are maintained throughout the scrutiny process.
7. The protocol may be revised by agreement between all the interested parties to enable continual improvement of the scrutiny process.
8. It should be noted that crime and disorder scrutiny is not a complaints process for Members or officers, the purpose is to scrutinise the partnership not individual crime issues.. There will be the opportunity for members of the public to ask questions in the usual way. The



meeting could be used for Councillor Call for Action but only after issues have been pursued elsewhere.

IMPLICATIONS OF REPORT

9. This report has implications in the following areas and the relevant Corporate Directors' comments are included:

Finance		Customer Services	
Human Resources		Equality and Diversity	
Legal	√	No significant implications in this area	

ANDREW DOCHERTY
CORPORATE DIRECTOR (GOVERNANCE)

There are no background papers to this report.

Report Author	Ext	Date	Doc ID
Ruth Rimmington	5118	16 November 2009	ProtocolCoveringReport

Scrutiny Protocol

Crime and Disorder



2008-2009
*Transforming Services:
Citizen Engagement
and Empowerment*



2009-2010
Cohesive and resilient communities



2009-2010
Better outcomes for people and places

Introduction

The Police and Justice Act 2006, as amended by the Local Government and Public Involvement in Health Act 2007, requires every local authority to have a crime and disorder committee with the power to scrutinise the arrangement for preparing and implementing the crime and disorder strategy. The committee must also have the power to scrutinise local crime and disorder matters.

In Chorley the Overview and Scrutiny Committee (OSC) will carry out this function.

This Protocol has been produced by the Overview and Scrutiny Committee and agreed by the Chair of the Responsible Authorities Group. The membership of this group includes those “Responsible Authorities” set out in legislation who have the shared responsibility for developing the crime and disorder strategy together with those bodies with whom the responsible authorities have a duty to co-operate. The “Responsible Authorities” are:

Chorley Council
Lancashire Constabulary
NHS Central Lancashire

South Ribble Council
Lancashire Police Authority

Lancashire County Council
Lancashire Fire and Rescue Service

The protocol sets out the mutual expectations of scrutiny members and the Responsible Authorities Group in relation to the community safety scrutiny process. It aims to ensure that good relationships between the scrutiny members and Responsible Authorities Group are maintained throughout the scrutiny process. The protocol may be revised by agreement between all the interested parties to enable continual improvement of the scrutiny process.

It should be noted that the Responsible Authorities Group covers both Chorley and South Ribble. There is potential in the future for joint scrutiny of the Responsible Authorities Group. The role of the Police Authority and Lancashire County Council in scrutiny will also evolve going forward.

Purpose

Scrutiny is positive, objective and constructive. It acknowledges good practice and recommends improvements where it feels that these would be of benefit. Scrutiny concentrates on service outcomes and seeks to add value to each service that it considers.

The key organisations involved in scrutiny of crime and disorder will be willing to share information, knowledge and reports which relate to the delivery and success of services in Chorley and carry out duties that would be reasonably expected of them to enable crime and disorder scrutiny to be successfully undertaken.

Organisations will work and co-operate together in an atmosphere of mutual respect and trust with an understanding and commitment to its aims. Crime and disorder scrutiny will be open and transparent.

Working together

The RAG will work in partnership with the Chorley Overview and Scrutiny Committee to provide objective and effective scrutiny of crime and disorder matters.

All dates and times of meetings of the Committee, agendas, minutes and reports will be circulated to nominated representatives of the Responsible Authorities Group. The Responsible Authorities Group will provide a representative for scrutiny inquiries and will nominate a main contact person for each crime and disorder scrutiny exercise.

The Responsible Authorities Group will be consulted on annual work programmes and informed in advance of scrutiny exercises that the Overview and Scrutiny Committee is intending to undertake. They will also be informed of the scope of relevant scrutiny exercises and will be given at least 21 days notice of invitations to attend meetings and to provide any required information.

The Responsible Authorities Group will provide information relating to the planning and operation of crime and disorder reduction activities and strategies that is required by the Overview and Scrutiny Committee so that it can undertake its required scrutiny reviews. This will not however, include confidential information that might impinge upon actual police operations or individuals, unless an individual gives consent for such information to be released.

The Responsible Authorities Group will be consulted on any draft reports before they are published. Final reports will be presented to Executive Cabinet, the Responsible Authorities Group, be published on the Council's website and circulated in accordance with the regulations on scrutiny of crime and disorder.

The Overview and Scrutiny Committee and Responsible Authorities Group will make arrangements for monitoring the implementation or relevant recommendations produced by the Overview and Scrutiny Committee and for reporting progress back.

Crime and disorder scrutiny is not to be used as a complaints procedure. Case studies may however be used as part of supporting information for scrutiny exercises. Individual crime and disorder issues in Members' wards will generally be best tackled at an operational level with local police officers. Scrutiny should only be used as a last resort to address issues which have not been resolved through other means.

This page is intentionally left blank



Report of	Meeting	Date
Corporate Director (Neighbourhoods)	Overview and Scrutiny Committee	1 December 2009

CRIME AND DISORDER REDUCTION PARTNERSHIP

PURPOSE OF REPORT

- To give Overview and Scrutiny Committee members background information, summary of progress and progress against key actions / projects for the Chorley and South Ribble partnership.

RECOMMENDATION(S)

- To accept the report,
- To request any further information Members may wish to receive.
- To consider how Chorley and South Ribble could jointly scrutinise the CDRP next year.

CORPORATE PRIORITIES

- This report relates to the following Strategic Objectives:

Put Chorley at the heart of regional economic development in the Central Lancashire sub-region		Develop local solutions to climate change.	
Improving equality of opportunity and life chances		Develop the Character and feel of Chorley as a good place to live	√
Involving people in their communities	√	Ensure Chorley Borough Council is a performing organization	

CRIME AND DISORDER REDUCTION PARTNERSHIP

- South Ribble and Chorley Crime and Disorder Reduction Partnerships are currently piloting a merger of the two partnerships which commenced in July 2008 for a 20 month period.
- The Police and Justice Act 2006, as amended by the Local Government and Public Involvement in Health Act 2007, requires every local authority to have a crime and disorder committee with the power to scrutinise the arrangement for preparing and implementing the crime and disorder strategy. The committee must also have the power to scrutinise local crime and disorder matters.



IMPLICATIONS OF REPORT

8. This report has no implications in the following areas:

Finance		Customer Services	
Human Resources		Equality and Diversity	
Legal		No significant implications in this area	

ISHBEL MURRAY
CORPORATE DIRECTOR (NEIGHBOURHOODS)

There are no background papers to this report.

Report Author	Ext	Date	Doc ID
Ruth Rimmington	5118	13 November 2009	ProgressCoveringReport

OUR VISION

The Safer Chorley and South Ribble Partnership. Working together for a safer Chorley and South Ribble.

The partnership is committed to ensuring that each district is one of the safest places to live, work and visit. The partnership wants people to feel safe in their communities and also to build safe, clean and sustainable neighbourhoods where people have equal access to first class, coordinated public services

Strategic Themes	1 Crime and Disorder	2 Positive Activities	3 Alcohol	4 Drugs	5 Vulnerable Households	6 Domestic Abuse
Long Term objectives/ Challenges	1.1 Reduce acquisitive crime 1.2 Reduce violent crime 1.3 Reduce criminal damage 1.4 Reduce fear of crime 1.5 Reduce crime and disorder 1.6 Reduce fire related incidents and arson	2.1 regular programme of diversionary activities for young people 2.2 reduce vehicle nuisance 2.3 reduce incidence of anti-social behaviour	3.1 reduce alcohol related violence 3.2 reduce the supply of alcohol to young people 3.3 reduce alcohol-related crime and disorder	4.1 Increase the number of drug users accessing effective treatment 4.3 Ensure that treatment services reflect the needs of the local community	5.1 Improve the quality of life for families involved in ASB and the communities in which they live 5.2 improved life chances for children and young people	6.1 Reduce repeat cases of domestic abuse 6.2 Provision of specialist services and interventions 6.3 Awareness raising and training
Measures and targets	<p>Challenge 1.1</p> <ul style="list-style-type: none"> Serious acquisitive crime rate (NI 16). (LAA) 1% reduction by March 2011. GREEN <p>Challenge 1.2</p> <ul style="list-style-type: none"> Serious violent crime rate (NI 15). Target, downward trend. Baseline 59 (07/08) <p>Challenge 1.3</p> <ul style="list-style-type: none"> Reduce criminal damage. Target downward trend. Baseline 1,458 (07/08). RED <p>Challenge 1.4</p> <ul style="list-style-type: none"> Feelings of safety during the day. Target 90% by March 2011 Feelings of safety at night. Target 50% by March 2011 <p>Challenge 1.5</p> <ul style="list-style-type: none"> Reduce crime in Chorley. Target 3% by March 2011. RED Perceptions of anti-social behaviour (NI 17). Target TBC Rate of proven re-offending by young offenders (NI 19). Target 1.68. Baseline 1.68 <p>Challenge 1.6</p> <ul style="list-style-type: none"> NI 49 (LAA)– Number of Primary fires and related fatalities and non-fatal casualties excluding precautionary checks. Target 157 by March 2011. Baseline 206 (South Ribble). Target 158 by March 2011. Baseline 225 (Chorley). GREEN NI 33 – Arson incidents Chorley (challenge 1.6) Target March 2010 fewer than: <ul style="list-style-type: none"> 96 accidental dwelling fires 28 deliberate primary fires 30 deliberate primary vehicle fires 218 deliberate secondary fires South Ribble (challenge 1.6) Target March 2010 fewer than: <ul style="list-style-type: none"> 59 accidental dwelling fires 18 deliberate primary fires 32 deliberate primary vehicle fires 172 deliberate secondary fires Number of Home Fire Safety Checks Delivered. Target 1,735 (Chorley) 2,560 (South Ribble) <p>Challenge 1.6</p> <ul style="list-style-type: none"> Number of Home Fire Safety Checks delivered. Target 1,735 (Chorley and 2,560 (South Ribble) by March 2010. 	<p>Challenge 2.1, 2.2 & 2.3</p> <ul style="list-style-type: none"> Perceptions of anti-social behaviour (NI 17). Target TBC <p>Challenge 2.2</p> <ul style="list-style-type: none"> Reduce criminal damage. Target, down ward trend. Baseline 1,458 (07/08). RED <p>Challenge 2.1, 2.2 & 2.3</p> <ul style="list-style-type: none"> Reduce crime in the Borough. Target 3% by March 2011. RED <p>Challenge 2.3</p> <ul style="list-style-type: none"> Perceptions of anti-social behaviour (NI 17). Target TBC 	<p>Challenge 3.1</p> <ul style="list-style-type: none"> Serious violent crime rate (NI 15). Target downward trend. Baseline 59 (07/08) <p>Assault with less serious injury rate (NI 20) (LAA). Target 3% reduction by March 2011. Chorley 610 Chorley, South Ribble 596 by March 2010. GREEN</p> <p>Challenge 3.2</p> <ul style="list-style-type: none"> Increase trader compliance. Target 93% by March 2010. Baseline 90%. GREEN <p>Challenge 3.3</p> <ul style="list-style-type: none"> Perceptions of anti-social behaviour (NI 17). Target TBC 	<p>Challenge 4.1 & 4.2</p> <ul style="list-style-type: none"> Drug users in effective treatment (NI 40). (LAA) Target 3,962 by 2010. GREEN <p>Challenge 4.3</p> <ul style="list-style-type: none"> Ensure that the Central Forward modernisation process is completed. New services delivering by September 2010. GREEN 	<p>Challenge 5.1 & 5.2</p> <ul style="list-style-type: none"> Number of families engaged with the Families First project. Target 30 families by June 2010. GREEN <p>Challenge 5.1</p> <ul style="list-style-type: none"> Reduce crime in Chorley. Target 3% by March 2011. RED 	<p>Challenge 6.1</p> <ul style="list-style-type: none"> Repeat incidents of domestic violence (NI 32). Target TBC 2009 <p>Challenge 6.2</p> <ul style="list-style-type: none"> Domestic violence – Murder (NI 34). Target set 2009 Maintain Specialist Domestic Violence Court Status Increase available places by 1. Currently there are refuge places for 3 families. <p>Challenge 6.3</p> <ul style="list-style-type: none"> Deliver a minimum of 3 multi-agency training events by March 2010. AMBER
Actions 2009-2011	<p>1.1 Implement a programme of joint visits between Police and Social Landlords in Chorley to problem premises in the Borough. GREEN</p> <p>1.2 Distribute 500 SMART water kits and crime prevention advice to elderly and vulnerable households as identified through partner agencies intelligence. GREEN</p> <p>1.3 Deliver a programme of multi-agency alcohol and criminal damage initiatives to years 7, 8 and 9 in all secondary schools. GREEN</p> <p>1.4 Support the move to Neighbourhood working within Chorley through the development of mini-MATAC meetings in each of the 7 Neighbourhood Areas. GREEN</p> <p>1.5 Develop a communications strategy to promote the work. GREEN</p>	<p>2.1 Consult with young people to develop a programme of diversionary tactics that suit the needs of local youths. GREEN</p> <p>2.2 Deploy detached outreach teams to areas experiencing more incidents of anti-social behaviour as evidenced through the MATAC process. GREEN</p> <p>2.3 Play Ranger resources to be targeted to areas of greatest need as highlighted through MATAC process. GREEN</p>	<p>3.1 Extend the Pub Watch banning scheme to include those who enter custody as a result of alcohol related violent crime. GREEN</p> <p>3.2 Review the use of Pub Watch to ensure there is a forum for licensees to meet and receive support from statutory service providers. GREEN</p> <p>3.3 A course in alcohol retailing to be offered to all retail premises that fail an alcohol test. GREEN</p>	<p>4.1 Through drug mapping data ensure that treatment services are targeted in areas of greatest need. GREEN</p> <p>4.2 Complete a needs assessment to inform the commissioning of joint alcohol and drugs services for Young People and adults. GREEN</p> <p>4.3 Modernise treatment services in the area through Central Forward modernisation process. Including criminal. GREEN</p>	<p>5.1 Using the assessment criteria refer the most vulnerable families onto the Families First Project. GREEN</p> <p>5.2 Ensure that the Families First project adapts to enable the Common Assessment Framework (CAF) to be used. GREEN</p>	<p>6.1 Deliver a minimum of three multi-agency domestic abuse training events to front line staff in partner organisations per year. AMBER</p> <p>6.2 Develop a multi-agency Reflect, Review and Reform group to support an effective MARAC process. GREEN</p> <p>6.3 Increase the availability of emergency accommodation units for victims of Domestic Violence. RED</p>

RAG and OWG CDRP Plan update
21st October 2009

Crime and Disorder (Section 1)

Objective	Action	Lead Agency Officer	Target and Baseline	Update	March 2010	Project status RAG
Reduce crime and disorder	Implement a programme of joint visits between Police and Social Landlords in Chorley to problem premises in the Borough	Chorley Council Paul Lowe	NI 16 – Serious Acquisitive Crime. Target 1% reduction by March 2011. Baseline 839 (Chorley) 858 (South Ribble)	5 mini MATAC's have now been established on the Chorley Borough. Astley, Chorley East, Clayton Brook Coppull and the Town centre. RSL police and council partners now work to highlight problem families and as part of core business now regularly arrange joint visits to problematic tenants. This has seen increase referrals into the CDRP vulnerable households project.	Chorley 833 South Ribble 852	Green
Reduce the Fear of Crime	Distribute 500 SMART water kits and crime prevention advice to elderly and vulnerable households as identified through partner agencies intelligence.	Lancashire Constabulary Chief Inspector Richard Robertshaw	NI 16 – serious acquisitive crime. Target 1% reduction by March 2011. Baseline 839 (Chorley) 858 (South Ribble)	There are approximately 130 kits remaining for distribution. The other kits have been delivered and used alongside the days of Action in areas of housing were there are either vulnerable householders, or higher levels of crime. Individual kits have been distributed to some victims of burglaries in dwellings. There are three days of action scheduled during the Autumn of 2009 within the Chorley area and the same principles will be utilised to target harden, as above, properties within those three areas using the remaining kits. South Ribble has now received their first order of Smartwater and currently developing there own enrolment strategy.	Chorley 833 South Ribble 852	Green

Objective	Action	Lead Agency Officer	Target and Baseline	Update	March 2010	Project status RAG
Reduce acquisitive crime	Implement 4 alley gate schemes per financial year in locations of greatest need as identified by the CDRP analyst	Chorley and South Ribble Councils Paul Lowe	NI 16 – Serious Acquisitive Crime. Target 1% reduction by March 2011. Baseline 839 (Chorley) 858 (South Ribble)	After and intelligence led approach to the selection of suitable areas to be considered for alley gates 10 schemes have been earmarked for completed by the end of financial year 0910. The project is on track and all schemes with be implemented in qtr 3 and 4 of the financial year. The project is being run using Chorley project management methodology.	Chorley 833 South Ribble 852	Green
Reduce crime and disorder	Increase the number of premises on the Town Centre radio link scheme.	Lancashire Constabulary Chief Inspector Richard Robertshaw	NI 16 – Serious Acquisitive crime. Target 1% reduction by March 2011. Baseline 839 (Chorley) 858 (South Ribble) Number of premises on the Town Centre Link. Target 80 premises by March 2011. Baseline 75.	The creation of a Business Watch scheme on the Town Centre has taken place and part of the commitment to the scheme will be the overhaul of the loan radio scheme which will identify possible future potential Traders who would like to join the Town Centre radio link scheme and give them the opportunity of trailing the system, before they decide whether they want to join. This process is ongoing but will be completed by March 2010	Chorley 833 South Ribble 852	Green

Objective	Action	Lead Agency Officer	Target and Baseline	Update	March 2010	Project status RAG
Reduction in criminal damage and Anti-social behaviour	Deliver a programme of multi-agency alcohol and criminal damage initiatives to years 7,8 and 9 in all secondary schools	Lancashire Constabulary Chief Inspector Richard Robertshaw	All secondary schools within the Chorley and South Ribble to have received initiatives within the school. Baseline 7 secondary schools (Chorley) 11 (South Ribble)	Choices (crim Dam. ASB etc) delivery ongoing already in. Astley Park SEN school, Bishop Rawstorne and Southlands. Holy Cross and Albany Science College to follow in the New Year. B Ace (Damage/ASB) being delivered by NHPT (PCSO's) into yr 5/6 Primary schools Ongoing. SR All South Ribble Secondary schools received an input on alcohol and associated anti-social behaviour including criminal damage in Year 7 (Choices) and in Year 8 (On the Pop). There is currently no package being delivered in Year 9. Year 6 pupils are receiving an educational input which includes an input on criminal damage in South Ribble Primary schools.	All schools to have received a range of packages delivered by Lancashire Constabulary and partners	Green
Reduction in crime and disorder	Support the move to Neighbourhood working within Chorley through the development of mini-MATAC meetings in each of the 7 Neighbourhood Areas	Chorley Council Paul Lowe	Reduce crime in Chorley. Target 3% reduction by March 2011. Baseline 58.3 crimes per 1000 population.	5 mini MATAC's have now been established on the Chorley Borough. Astley, Chorley East, Clayton Brook Coppull and the Town centre. RSL police and council partners now work to highlight problem families and priorities for each of their localities. Further Mini MATAC's are in development. The Mini MATAC initiative is now being established on South Ribble with the Kingsold area being the first place to benefit. Further Mini MATAC's are planned for implementation in Chorley South West, WadeHall, Bamber Bridge, Broadfield And Leyland Town Centre	57 crimes per 1000 population	Green
Promote the Safer Chorley and South Ribble Partnership.	Develop a communications strategy to promote the work of the partnership	Chorley and South Ribble Councils Paul Lowe	NI 17 – Perceptions of Anti-social behaviour. Target and baseline to be set	A communication group is in its early genesis. An initial meeting has taken place and the second will focus on the development of a communication strategy between partners across the merged CDRP. It is envisaged the strategy will be in place by December 2009.	A Partnership communications plan to be in place	Green

Objective	Action	Lead Agency Officer	Target and Baseline	Update	March 2010	Project status RAG
Improve road safety	Increase the number of available Speed Indicator Device (SpID) sites available in each Borough	Lancashire Constabulary Chief Inspector Richard Robertshaw	NI 47 – People killed or seriously injured in road traffic accidents. Target 761 by March 2011. Baseline 912. Number of SpID sites in use. Baseline 4. Target 16	SpIDs are now the responsibility of LCC, although some Parish Councils have purchased their own. The Road Policing Unit has acquired a second mobile SpID, which is available on request from CBMs in response to PACT concerns across the division.	812	Green
Increase road safety	Using Automatic Number Plate Recognition (ANPR) equipment, conduct 5 multi-agency events to tackle vehicle crime. Including ANPR coverage in rural areas of the Boroughs	Chorley and South Ribble Council Paul Lowe	NI 47 – People killed or seriously injured in road traffic accidents. Target 761 by March 2011. Baseline 912. Reduce crime in Chorley. Target 3% by March 2011. Baseline 58.3 per 1000 population	2 Multi agency ANPR events have been conducted on Chorley and 2 operations on South Ribble. A further 3 events are planned to take place on both Chorley and South Ribble areas.	57 crimes per 1000 population	Green

Objective	Action	Lead Agency Officer	Target and Baseline	Update	March 2010	Project status RAG
Reduce crime and disorder	Develop 5 days of action projects in each Borough	Chorley and South Ribble Councils Paul Lowe	<p>NI 16 – Serious Acquisitive crime. Target 1% reduction by March 2011. Baseline 839 (Chorley) 858 (South Ribble)</p> <p>NI 20 – assault with injury rate. Target 3% reduction by March 2011. Baseline 622 (Chorley) 615 (South Ribble).</p> <p>Reduce crime in Chorley. Target 3% reduction by March 2011. Baseline 58.3 crimes per 1000 population</p>	<p>The Chorley area has delivered its full weeks of action program. With the development of NH working Chorley will continue with local activity by delivering the action outlined in each of the 7 Neighbourhood action plans. The CDRP will continue with intelligence led operations, which will further support the NH agenda by the Mini MATAC and MATAC processes. South Ribble has delivered 2 respect weeks and have a further 2 planned for October 2009 and February 2010. All action events were have been delivered in the areas of most need across both boroughs and focussed equally on enforcement, cleaner greener issues and engagement.</p>	<p>Chorley 833 South Ribble 852</p> <p>Chorley 644 South Ribble 621 57 crimes per 1000 population</p>	<p>Green</p>

Objective	Action	Lead Agency Officer	Target and Baseline	Update	March 2010	Project status RAG
Reduce the number of fire related fatalities and non-fatal casualties.	Deliver child fire safety education (CHILDSAFE) to all year 2 and year 6 classes in Chorley and South Ribble	Lancashire Fire and Rescue Mark Wissett	NI 49 – Number of Primary fires and related fatalities and non-fatal casualties excluding precautionary checks. Target 158 by March 2011. Baseline 225 (Chorley) NI 49 – Number of Primary fires and related fatalities and non-fatal casualties excluding precautionary checks. Target 157 by March 2011. Baseline 206 (South Ribble)	Commenced with the new school year Sept 09. All year 2 and year 6 classes in Chorley and South Ribble will have received the program by end of march 2010 Technical issues with IT have meant no further information has been available	No more than 168 incidents in Chorley. No more than 166 incidents in South Ribble	Green

Objective	Action	Lead Agency Officer	Target and Baseline	Update	March 2010	Project status RAG
Reduce the number of fire related fatalities and non-fatal casualties.	Work with partners to increase the number of Home Fire Safety Checks being delivered. Specifically for people aged over 60 years. Deliver specialised Home Fire Safety Checks for people at risk from targeted attack using fire as a weapon	Lancashire Fire and Rescue Service Mark Wissett	Number of Home Fire Safety Checks delivered. Target 1,735 (Chorley) and 2,560 (South Ribble) by March 2010 NI 49 – Number of Primary fires and related fatalities and non-fatal casualties excluding precautionary checks. Target 158 by March 2011. Baseline 225 (Chorley). Target 157 by March 2011. Baseline 206 (South Ribble)	Last available figures 350 out of 1016 were in over 60s Technical issues with IT have meant no further information has been available LFRS Have delivered 4 specialised Home Fire Safety Checks for people at risk from targeted attack using fire as a weapon across Chorley and South Ribble. There is no target associated with this as checks are carried out on a referral only need by basis. The response for all referrals is within 24 hours	1,735 (Chorley) 2,560 (South Ribble) No more than 168 incidents in Chorley. No more than 166 incidents in South Ribble	Green Green

Objective	Action	Lead Agency Officer	Target and Baseline	Update	March 2010	Project status RAG
Reduce the instances of arson and the number of fires	<p>Deliver Fire Awareness Child Education (FACE) programme to children aged between 4 and 12 years. (Numbers)</p> <p>Deliver the Arson Programme to work with Young People aged between 10 and 17 years who have committed arson</p>	<p>Lancashire Fire and Rescue Service Mark Wissett</p>	<p>NI 33 – Arson incidents (Chorley). Target March 2010 fewer than:</p> <ul style="list-style-type: none"> • 96 accidental dwelling fires • 28 deliberate primary fires • 30 deliberate primary vehicle fires • 218 deliberate secondary fires <p>NI 33 – Arson incidents South Ribble. Target March 2010 fewer than:</p> <ul style="list-style-type: none"> • 59 accidental dwelling fires • 18 deliberate primary fires • 32 deliberate primary vehicle fires • 172 deliberate secondary fires 	<p>There is no target associated with this as checks are carried out on a referral only need by basis</p> <p>Technical issues with IT have meant no further information has been available</p>	See target and baseline box	Green

Objective	Action	Lead Agency Officer	Target and Baseline	Update	March 2010	Project status RAG
Reduce the arson and number of fires	Work closely with partners to deliver the Bright Sparx campaign in October and November	Lancashire Fire and Rescue Service Mark Wissett	<p>NI 49 – Number of Primary fires and related fatalities and non-fatal casualties excluding precautionary checks. Target 158 by March 2011. Baseline 225 (Chorley).</p> <p>NI 49 – Number of Primary fires and related fatalities and non-fatal casualties excluding precautionary checks. Target 157 by March 2011. Baseline 206 (South Ribble)</p> <p>NI 33 – Arson incidents Chorley. Target March 2010 fewer than:</p> <ul style="list-style-type: none"> • 96 accidental dwelling fires • 28 deliberate primary fires • 30 deliberate primary vehicle fires • 218 deliberate secondary fires <p>NI 33 – Arson incidents South Ribble. March 2010 fewer than:</p>	<p>The bright sparks response has been formed on and intelligence led basis. And encompasses crime prevention and enforcement elements. Technical fire safety, community safety are taking part in a range of activities including joint premises visits and storage inspections.</p> <p>Incident data not currently available due to technical issues with IT</p>	<p>No more than 168 incidents in Chorley.</p> <p>No more than 166 incidents in South Ribble</p>	<p>Green</p>

Objective	Action	Lead Agency Officer	Target and Baseline	Update	March 2010	Project status RAG
<p>Reduce the number of fire related fatalities and non-fatal casualties</p>	<p>Engage with identified at risk groups to</p> <ul style="list-style-type: none"> • Promote Home Fire Safety • Ensure those most at risk receive a free home fire safety check • Raise fire safety awareness regarding the danger of fire and the consequences of deliberate fires, hoax calls and associated anti-social behaviour <p>Work in partnership with other agencies to target anti-social behaviour and associated fire related incidents</p>	<p>Lancashire Fire and Rescue Mark Wissett</p>	<p>NI 49 – Number of Primary fires and related fatalities and non-fatal casualties excluding precautionary checks. Target 158 by March 2011. Baseline 225 (Chorley).</p> <p>NI 49 – Number of Primary fires and related fatalities and non-fatal casualties excluding precautionary checks. Target 157 by March 2011. Baseline 206 (South Ribble)</p>	<p>The fire service engaging with a number of services and organisations to ensure engagement with high risk groups is facilitated. Some of the services and organisation include Help direct, Age concern, Housing providers. The Fire service have also obtained funds to run the fire break youth intervention program targeted at vulnerable youths. This initiative will run from November 09.</p>	<p>Chorley 168</p> <p>South Ribble 166</p>	<p>Green</p>

Objective	Action	Lead Agency Officer	Target and Baseline	Update	March 2010	Project status RAG
To ensure that people feel safe within their own neighbourhoods	Utilise the Place Survey to identify anti-social behaviour issues that concern the public and geographically map results.	Chorley and South Ribble Councils Paul Lowe	NI 17 – Perceptions of Anti-social behaviour. Targets set 2009	Some of the place survey results have been mapped for both Chorley and South Ribble to ward level. The geographic areas have been cross-referenced with our priorities areas and there is a strong correlation between areas of higher perceptions of ASB and areas of elevated ASB. This information will be used by the new comms groups to help direct communication into the priority areas and with further reinforce the intelligence led delivery of operational resources.	2011 target	Green
Reduce crime and disorder	Geographically map hate crime and incidents on GIS and develop initiatives and procedures to reduce hate crime through the MATAC process	Chorley and South Ribble Councils Paul Lowe	Percentage of people who feel safe at night – Target: 50% by March 2011. Percentage of people who feel safe during the day – Target: 90% by March 2011 NI 1 - % of people who believe people from different backgrounds get on well together. Target TBC 2009	Hate crimes are being mapped as part of the Chorley and South Ribble MATAC document. They will continue to be monitored and where necessary multi agency intelligence led interventions operations will be implemented.	2011 target	Green
Reduce crime and disorder	Develop a third party reporting mechanism for Hate Crime with front line staff in partner organisations	Chorley and South Ribble Councils Paul Lowe	NI 1 - % of people who believe people from different backgrounds get on well together. Target TBC 2009	Completed: - Developed and in place.	2011 target	Green

Objective	Action	Lead Agency Officer	Target and Baseline	Update	March 2010	Project status RAG
Reduce violent crime Improving community cohesion	Develop a tension monitoring report for the district	Lancashire Constabulary Chief Inspector Richard Robertshaw	Percentage of people who feel safe at night – Target: 50% by March 2011. Percentage of people who feel safe during the day – Target: 90% by March 2011 NI 1 - % of people who believe people from different backgrounds get on well together. Target TBC 2009	Completed: -Tension monitoring is now a standard agenda item on both Chorley and South Ribble MATAC's. Fortunately community tension incidents are relatively rare and of a low level across both boroughs. The CDRP analyst continues to monitor incident and will continue to observe the emergence of any patterns or trends in incidents.	2011 target	Green
Reduce re-offending	Comprehensive assessment and needs lead intervention (in accordance with Youth Justice Board) with young people identified in the youth justice system	Lancashire YOT Colin Buckley	NI 19 – rate of proven re-offending by young offenders. Target 1.68 re-offences. Baseline 1.68	Annual leave no update available	1.68	-----

Positive Activities/ASB (Section 2)

Objective	Action	Lead Agency	Target and Baseline	Update	March 2010	Project status RAG
-----------	--------	-------------	---------------------	--------	------------	--------------------

Objective	Action	Lead Agency	Target and Baseline	Update	March 2010	Project status RAG
Reduction in crime and disorder	Consult with young people to develop a programme of diversionary tactics that suit the needs of local youths	Chorley and South Ribble Councils Janet Finn	Reduce crime in Chorley. Target 3% reduction by March 2011. Baseline 58.3 per 1000 population	<p>The strategic Positive Activities Group has met three times as a sub-group of the Children's Trust to look at the provision of Positive Activities across Chorley and South Ribble. The group is strategic in nature and covers such areas as auditing provision, gathering intelligence, analysis, identifying gaps, targeting resources, bidding for resources, commissioning and joint working, where appropriate. The group recognised that there are a number of groups who are working in this field, often with the same people/agencies involved. An early task was to review the current arrangements and make recommendations to improve their efficiency and effectiveness. This group have all commissioned diversionary activities for Friday and Saturday evenings targeting hot spot areas across Chorley and South Ribble. This commissioning has involved the Voluntary, Community and Faith Sector and Chorley and South Ribble Borough Councils.</p> <p>Young people have been consulted through Positive Activities for Young People steering groups and through Youth Councils and YPS Youth Participation workers for Chorley and South Ribble. Home visits have taken place by the YPS and Police to targeted young people on Kingsfold, Penwortham to consult about diversionary activities.</p> <p>A consultation has taken place with young people about Level one sexual health services at West Paddock, Leyland.</p> <p>A full programme of diversionary activities took place over the summer months with over 1332 hours of diversionary activities delivered by YPS staff to 30 targeted young people from across Chorley and South Ribble.</p>	57 crimes per 1000 population	Green

Objective	Action	Lead Agency	Target and Baseline	Update	March 2010	Project status RAG
Reduce Youth Offending	Deploy detached outreach teams to areas experiencing more incidents of anti-social behaviour as evidenced through the MATAC process	Young People's Service Janet Finn	NI 17 - Perceptions of anti-social behaviour. Targets and baselines set 2009	Detached teams from the Young people's Service have delivered targeted outreach work on Kingsfold Drive, Penwortham. The YPS are now supporting with the delivery of the Penwortham Community Club Youth provision on a Tuesday and Friday evening in the absence of the PCSO and community volunteers. The Sexual Health outreach team have continued to deliver in Clayton Brook, Coppull, Wade Hall and Moss Side. Leyland detached teams have consulted with young people in Leyland Town Centre and at the Leyland Tesco.	TBC	Green
Reduce Youth Offending	Play Ranger resources to be targeted to areas of greatest need as highlighted through MATAC process	Chorley Council Paul Lowe	NI 17 – Perception of anti-social behaviour. Target and baseline to be set 2009.	The Positive Activity Group commissioned a piece of work to map the crime and disorder associated with young people across Chorley Borough. This information indicated clear areas that would benefit from the Play ranger resource. The People Directorate at Chorley Council have ensured the play rangers cover the areas highlighted as having elevated antisocial behaviour.	TBC	Green
Reduce anti-social behaviour	Increase the number of Social Landlords using Anti-Social Behaviour Injunctions (ASBIs)	Chorley and South Ribble Councils Paul Lowe	NI17 – perceptions of anti-social behaviour. Target to be set 2009	Whilst there is still as disparity between Chorley and South Ribble regarding the usage of ASBI's progress is being made. New Progress in South Ribble has a well-established process for the attainment of ASBI's and can demonstrate they are being used effectively to target problem tenants. CCH and Places for people have begun to use ASBI's as part of their enforcement package, although currently they do not use them as widely as their South Ribble counterparts. Chorley councils ASB Officer is continuing to liaise with both CCH and Places for people to help facilitate a more robust approach to ASBI usage.	TBC	Amber

Objective	Action	Lead Agency	Target and Baseline	Update	March 2010	Project status RAG
Reduce Criminal Damage	Pilot extended schools scheme within at least one school in the Chorley and South Ribble area	Lancashire County Council Mel Ormesher	Reduce Criminal damage. Target to see a downward trend NI17 – perceptions of anti-social behaviour. Target to be set 2009	The national target for Extended Services is that all schools are providing access to the 'Full Core Offer' of services by March 31 st 2010. Currently (09.10.09) the following figures for numbers of schools providing access to the full core offer in each district are as follows; Chorley – 86% = 51 out of 59 South Ribble – 100% 52 out of 52 It is anticipated that all schools across the 2 districts will be providing the full core offer by 31 st December 2009	Downward trend TBC	Green

Alcohol (Section 3) Please also see the Central Lancashire Alcohol Action Plan

Objective	Action	Lead Agency	Target and Baseline	Update	March 2010	Project status RAG
Reduce alcohol related crime and disorder	Extend the Pub Watch banning scheme to include those who enter custody as a result of alcohol related violent crime	Lancashire Constabulary Chief Inspector Richard Robertshaw	NI 15 – Serious Violent Crime. Target downward trend. Baseline 27 incidents NI 20 – assault with injury rate. Target 3%	This is a longer term action although progress is being made.	No more than 27 incidents Chorley 644 South Ribble 621	Green

Objective	Action	Lead Agency	Target and Baseline	Update	March 2010	Project status RAG
Reduce alcohol related crime and disorder	Review the Pub Watch across Chorley and South Ribble	Lancashire Constabulary Chief Inspector Richard Robertshaw	reduction by March 2011. Baseline 622 (Chorley) 615 (South Ribble). Reduce crime in Chorley. Target 3% reduction by March 2011. Baseline 58.3 crimes per 1000 population	This is an ongoing action being lead by Tony Bushell. Most pub watch schemes across the two areas are currently up and running and will be reviewed over the course of the next year.	No more than 27 incidents Chorley 644 South Ribble 621 57 crimes per 1000 population	Green
Increase trader compliance	A course in alcohol retailing	Lancashire Constabulary	70% of premises that fail a test	All premise that fail a test purchase are offered this scheme. Take up has been excellent with 91 % of eligible premises having attended or	70% of premises that fail to have	Green

				are due to attend.	passed the course	
Reduction of crime and disorder	to be offered to all retail premises that fail an alcohol test purchase	Chorley Council Paul Lowe	purchase to pay for the course	Completed: - Chorley and South Ribble MALT (Multi Agency Licensing Team) now monitor licensed premises using a Red Amber Green monitoring system (RAG).		Green
Reduce the supply of alcohol to young people	Develop a multi-agency grading system to rate all licensable activities within Chorley Borough	Chorley and South Ribble Councils Paul Lowe	To have in place a regularly updated grading system contributed to by all licensing partners	76 test purchases have been conducted in Chorley, South Ribble and West Lancashire to date with activities for the remainder of the year being conducted through the next MALT meeting on Oct 28 th Individual figures Chorley 28 with 2 failures (7%) South Ribble – 17 with 2 failures (11%) West Lancashire 43 with 9 failures (18%)	93%	Green
Reduce supply of alcohol to young people	Develop a proxy sales test purchasing protocol	Lancashire Constabulary and Trading Standards	Reduce Criminal damage. Target to see a downward trend	The next round of test purchase operations are going to include an element of targeted proxy sales work	Downward trend	Green
Reduction of alcohol related crime and disorder	Ensure that tier-2 outreach is part of the Central Locality treatment service modernisation process	Lancashire Drug and Alcohol Action team Sam Jones	Reduce all crime in Chorley. Target 3% by March 2011. Baseline 58.3 per 1000 population	LDAAT partnership and Central Forward Project Group are working in partnership to develop a combined drug and alcohol Tier 2 and 3 service model for implementation by the successful provider and contract holder in October 2010	57 crimes per 1000 population	Green
Reduce re-offending	Secure funding to continue the	Chorley and South Ribble	NI 16 – Serious Acquisitive Crime	Funding for continuation of the project was not forthcoming from partners. The Merged CDRP in conjunction with LDAAT and West	Chorley 833 South Ribble	Red

						852	
Reduce alcohol-related crime and disorder	Young Tower Programme	Councils Paul Lowe	rate. Target 1% reduction by March 2011. Baseline 839 (Chorley) 858 (South Ribble)	Lancashire CDRP were able to raise enough funds to reimburse Lancashire Constabulary for the monies they committed funding the project for 3 months after the initial SLB funding had expired.	Downward trend	Green	
Reduce alcohol-related crime and disorder	Geographically map premises that have failed test purchasing	Lancashire Constabulary	Reduce Criminal damage. Target to see a downward trend	This piece of work is yet to be started however it will be completed by the end of the FY.	Pub Watch schemes to be established in main areas of the two districts	Green	
Reduce alcohol-related crime and disorder	Review the use of Pub Watch to ensure there is a forum for licensees to meet and receive support from statutory service providers	Police Licensing Team	To have Pub Watch meetings set up with regular meetings in main areas of the two districts by March 2010	This is an ongoing action being lead by Tony Bushell. Most pub watch schemes across the two areas are currently up and running and will be reviewed over the course of the next year.	A comprehensive report on DPPOs available for the two local authorities	Green	
Reduce alcohol-related crime and disorder	Review the Coppull Designated Public Places Order	Chorley Council Paul Lowe	Report developed regarding the effectiveness of the order and recommendations to developing further zones	Completed: -The Coppull designation order has been reviewed and findings presented to the RAG along with future recommendations as to the use of DPPO's across both Chorley and South Ribble.	March 2010	Project status RAG	
Objective	Action	Lead Agency	Target and Baseline	Update	Project status	RAG	
Reduce alcohol related harm	Implement regular forums for off-licensed premises to meet with local police, licensing and other partners to	Lancashire Constabulary Chief Inspector Richard Robertshaw	To host 2 meetings for local licensees	One forum for off-licensed and one for on-licensed premises has been conducted so far this year. There are no dates currently for the second forum Information on regularity and type of meeting have not been discussed other than in relation to pub watch and the expansion of off watch and whether these are adequate for the needs of our licensed trade	2 meetings to have been conducted	Amber	

	share information							
Reduce alcohol-related harm	Increase the numbers trained in alcohol brief interventions	NHS Central Lancashire	Commission alcohol brief intervention training. Currently unavailable	A budget has been identified to roll out brief intervention training. NHS Central Lancashire are going to be contacting organisations for information about who should receive training	To have a fully commissioned alcohol brief intervention training system	Green		
Improve the data available to target alcohol-related harm	Share data gathered through the Trauma Injury and Intelligence Project (TIIP)	Steve Coveney NHS Central Lancashire	Data to be regularly shared between A&E and the two CDRPs by (Time scales due to be agreed July 2009)	Data is beginning to be made available. The most recent information is from 2008-09 with more current data being made available soon.	TIME SCALES AGREED JULY 2009	Green		

Drugs/JCG (section 4)

Objective	Action	Lead Agency Officer	Target and Baseline	Update	March 2010	Project status RAG
------------------	---------------	----------------------------	----------------------------	---------------	-------------------	-------------------------------------

Objective	Action	Lead Agency Officer	Target and Baseline	Update	March 2010	Project status RAG
Reduction of illicit substances within each Borough	Through drug mapping data ensure that treatment services are targeted in areas of greatest need	Lancashire Drug and Alcohol Action team Sam Jones	New Adult Drug and Alcohol Treatment services for both Criminal Justice and community settings NI 40 – Drug users in effective treatment. Lancashire Target 4,041 by March 2011. Baseline 3808 New Services to be operational from October 2010.	The LDAAT undertake an annual needs assessment, which outlines drug related activity, numbers in treatment and use the drug market mapping information as supplied from the police to give an overview of need across the County. The monthly Central Lancashire Joint Commissioning Group (JCG) oversee the mapping of drug markets via information supplied through the market mapping data and information key members of the JCG and South Ribble Partnership are on-going. LDAAT provide performance data relating to drug treatment services for young people and adults for on-going discussion at the JCG and feed into the Officer Working Group.	3,962	Green

Objective	Action	Lead Agency Officer	Target and Baseline	Update	March 2010	Project status RAG
Reduce drug and alcohol-related harm	<p>Complete a needs assessment to inform the commissioning of joint alcohol and drugs services for Young People and adults</p> <p>Modernise treatment services in the area through Central Forward modernisation process including Criminal Justice Contracts.</p>	<p>NHS Central Lancashire and Lancashire Drug and Alcohol Action Teams</p> <p>Sam Jones</p> <p>NHS Central Lancashire and Lancashire Drug and Alcohol Action Teams</p> <p>Sam Jones</p>		<p>The LDAAT partnership are undertaking the re-commissioning of all adult drug and alcohol treatment community and criminal justice services in Central Lancashire (including Chorley and South Ribble areas).</p> <p>The procurement process of developing new service model and serving notice to current providers will begin in October 2009. The deadline for commencement of the single contract to deliver a new combined drug and alcohol community and criminal justice service will be October 2010.</p> <p>Please note that this does not include the re-commissioning of young peoples substance misuse services – Young Addaction.</p>	<p>New treatment service provider contracts to begin April 2010</p> <p>3,962</p>	<p>Green</p>

Vulnerable Households (Section 5)

Objective	Action	Lead Agency	Target and Baseline	Update	March 2010	Project status RAG
Reduction in crime and disorder	Using the assessment criteria refer the most vulnerable families onto the Families First Project.	Chorley and South Ribble Councils Paul Lowe	30 families to be engaged with the project by March 2010 Reduce crime in Chorley. Target 3% reduction by March 2011. Baseline 58.3 crimes per 1000 population	<p>The families' first project is exceeding expectation. 15 families from South Ribble have been on the project, 10 are still active and 5 have been closed. 7 more families have been put forward for consideration.</p> <p>34 families from Chorley have been on the project, 18 are still active and 16 have been closed.</p> <p>As the Police is no longer measuring its performance against an all crime target CDRP resources are only being allocated to LAA and Local NI monitored targets. This means that the all crime target has little chance of being reached. The CDRP is liaising with Chorley Council to look at removing the all crime target from their Corporate strategy.</p>	30 families 57 crimes per 1000 population	Green Red
Reduction in crime and disorder	Ensure that the Families First project adapts to enable the Common Assessment Framework (CAF) to be used	Chorley and South Ribble Councils Paul Lowe	30 families to be engaged with the project by March 2010 Reduce crime in Chorley. Target 3% reduction by March 2011. Baseline 58.3 crimes per 1000 population	<p>Completed: -the Common Assessment Framework (CAF) is the main tool, used to refer families into the vulnerable households (VH) projects. All CAF's are managed by the vulnerable households coordinator</p> <p>15 families from South Ribble have been on the project, 10 are still active and 5 have been closed. 7 more families have been put forward for consideration.</p> <p>34 families from Chorley have been on the project, 18 are still active and 16 have been closed.</p> <p>As the Police are no longer measuring its performance against an all crime target CDRP resources are only being allocated to LAA and Local NI monitored targets. This means that the all crime target has little chance of being reached. The CDRP is liaising with Chorley Council to look at removing the all crime target from their Corporate strategy.</p>	30 families 57 crimes per 1000 population	Green Red

Domestic Violence (Section 6)

Objective	Action	Lead Agency Officer	Target and Baseline	Update	March 2010	Project status RAG
Reduce the repeat victimisation of Domestic Violence	Develop a multi-agency Reflect, Review and Reform group to support an effective MARAC process.	Chorley and South Ribble Councils and Lancashire Constabulary	NI 32 – Repeat incidents of domestic violence. Target and baseline to be set June 2009	Any issues with regards to MARAC are discussed prior to the start of each MARAC on a monthly basis rather than set up another meeting. There is discussion currently being held about the re implementation of Lancs. wide steering group.	To have an established group with members attending regular meetings	Green
Reduce Homelessness as a result of domestic abuse	Increase the availability of emergency accommodation units for victims of Domestic Violence	Chorley and South Ribble Councils	Increase available places by 1. Currently there are refuge places for 3 families.	Clare House Womens Refuge in South Ribble has capacity for 8 Families. Chorley Womens Refuge has capacity for 3 families with no plans for expansion. Extra space could only be secured if purpose built refuge becomes available or is commissioned.	Extra refuge place to be achieved March 2011	Red

Objective	Action	Lead Agency Officer	Target and Baseline	Update	March 2010	Project status RAG
Increase the awareness of domestic abuse amongst partners	Deliver a minimum of three multi-agency domestic abuse training events to front line staff in partner organisations per year	Chorley and South Ribble Councils	NI 32 – Repeat incidents of domestic violence. Target and baseline to be set June 2009 NI 34 – Domestic violence – murder. Target and baseline to be set June 2009.	The training day incorporates the CAADA Risk Indicator Checklist of which a new version is to be introduced in Lancs in the very near future. A decision has been made not to deliver the training until the Domestic Abuse Project Coordinator has attended the Train the Trainer for the new Risk Indicator Checklist which has been booked for 26 th October 2009. However a Witness Service Volunteer Training Package has been developed by the Domestic Abuse Project Coordinator and was delivered in July, a way forward meeting is to be held with regards to the rollout of this program.	Three training events to a wide variety of partners to have been conducted	Amber
Increase the awareness of domestic abuse amongst partners	Develop a level 2 training package to be delivered to front-line services that require more than basic awareness training for domestic abuse	Chorley and South Ribble Councils	NI 32 – Repeat incidents of domestic violence. Target and baseline to be set June 2009 NI 34 – Domestic violence – murder. Target and baseline to be set June 2009. Completed training package available to practitioners	A consultation has been held with the local DV service providers and training consultant who is the author and provider of the current basic awareness programme. Funding is now being sourced to enable the development of a 'Level 2'. Awards for all have been identified as a potential funder and an application is to be made in the very near future.	A training package to be available for use for agencies requiring more than a basic awareness of domestic abuse	Amber
Increase the awareness of domestic abuse amongst partners	Deliver a minimum of one half-day training session covering domestic violence and immigration to practitioners dealing with those without recourse to public funds	Chorley and South Ribble Councils	Minimum of one training course to be delivered.	Multi Agency Immigration Training was delivered in July 2009. The course content included Background Information, Evidence, Key Points, Out of time applications, DV from other family members, Public funds, EEA Nationals, Refugees/Asylum Seekers (brief), Possible Remedies, Case Studies	Minimum of one training course to be delivered.	Green

Objective	Action	Lead Agency Officer	Target and Baseline	Update	March 2010	Project status RAG
Reduce Domestic Violence	<p>Secure funding for the Independent Domestic violence Advocates (IDVA) for 2009/10</p> <p>Secure funding for the IDVA service for the three years beyond March 2010</p>	Chorley, South Ribble and Lancashire County Council	<p>NI 34 – Domestic violence – murder. Target and baseline to be set June 2009.</p> <p>NI 32 – Repeat incidents of domestic violence. Target and baseline to be set June 2009</p>	<p>The service has been operating beyond recommended capacity case load. Final figures of the referral number unavailable at the time of report.</p> <p>The service has been in attendance at all monthly Multi Agency Risk Assessment Conference (MARAC) meetings and has had service representation at each of the weekly Specialist Domestic Violence Courts (SDVC) which hears cluster domestic violence cases each Tuesday afternoon from the Chorley & South Ribble area.</p> <p>Funding still to be sourced for 2010-11</p>	<p>IDVA service to have been operational in the financial year</p> <p>Funding to be secured for the service to continue in the future.</p>	<p>Green</p> <p>Green</p> <p>Red</p>
Reduce repeat incidents of domestic abuse	Utilise the newly developed School Domestic Abuse Package to deliver training and lesson plans within schools	Chorley and South Ribble Councils	<p>NI 32 – Repeat incidents of domestic violence. Target and baseline to be set June 2009</p> <p>NI 34 – Domestic violence – murder. Target and baseline to be set June 2009.</p>	Not yet completed at LCC and therefore not able to be delivered.	TBC TBC	Amber

Objective	Action	Lead Agency Officer	Target and Baseline	Update	March 2010	Project status RAG
Reduce the repeat victimisation of Domestic Violence	Registered social landlords to phase in clauses stating that committal or the threat of domestic abuse will class as a breach of tenancy	Chorley and South Ribble Councils	NI 32 – Repeat incidents of domestic violence. Target and baseline to be set June 2009	Currently gathering copies of tenancy agreements from RSL and will carry out consultation via the Chorley & South Ribble Homeless network.	TBC	Amber

Objective	Action	Lead Agency Officer	Target and Baseline	Update	March 2010	Project status RAG
Reduce the repeat victimisation of Domestic Violence	Maintain the Specialist Domestic Violence Court status	Chorley and South Ribble Councils	<p>Maintenance of the 12 Specialist Domestic Violence Court (SDVC) components:</p> <ol style="list-style-type: none"> 1. Multi-agency partnerships with protocols 2. Multi-agency risk assessment and risk management procedures for victims, perpetrators and children 3. Identification of cases 4. Specialist domestic violence support services 5. Trained and dedicated criminal justice staff 6. Court listing considerations 7. Equality and diversity issues 8. Performance management 9. Court facilities 10. Children's services 11. Managing perpetrators <p>Other services (such as housing and refuge services)</p>	<p>The SDVC is currently operating successfully against components 1-12. Accreditation achieved April 2008.</p> <p>There are concerns that IDVA funding for 2010-11 has not yet been secured. There are concerns that the SDVC status will be lost without this service as it will have huge implications on component 2 and 4 and may render the SDVC unfit for purpose of accreditation.</p>	To be SDVC accredited	Green

SAFER CHORLEY AND SOUTH RIBBLE PARTNERSHIP

(CRIME AND DISORDER REDUCTION PARTNERSHIP)

PROGRESS REPORT

November 2009



Scrutiny Committee

Summary

1. Crime and Disorder Reduction Partnerships – also known as Community Safety Partnerships in Wales - are statutory partnerships in which “responsible authorities” have a duty to work with other local agencies to tackle crime and disorder. “Responsible authorities” are the police; police authorities; local authorities; fire and rescue authorities; and Primary Care Trusts (Local Health Boards in Wales). There is a provision in the current *Policing and Crime Bill* to add probation authorities to this list. There are 338 CDRPs, and they are generally sited at unitary authority level in single tier authorities and district level in two tier authorities. The number has reduced in recent years partly because of mergers, which resulted from recognition of the difficulties faced by smaller partnerships, and partly because of local government reorganisation.
2. The role of CDRPs is to work together to formulate and implement strategies in order to reduce crime and disorder in their areas. They were introduced by the *Crime and Disorder Reduction Act 1998*. Early evaluations pointed to the complexity of funding arrangements, which had led to administrative burdens on partnerships. There have been various changes to simplify the funding system. Currently, funding is mainly through the new Area Based Grant, which is a non ring-fenced general grant to local authorities, who then decide on the allocation to CDRPs; however, there are still some specific grants for capital elements, and for tackling specific types of crime. Recent Government reforms have resulted in a repeal of annual reporting requirements, and the introduction of statutory minimum standards based on six “hallmarks” of effective practice. Other reforms have included the introduction of new scrutiny methods through Crime and Disorder Overview and Scrutiny Committees in local authorities.
3. South Ribble and Chorley Crime and Disorder Reduction Partnerships are currently piloting a merger of the two partnerships, which commenced in July 2008 for a 20-month period. The partnership has been named the Safer Chorley and South Ribble Partnership and has aligned its performance management against the current LAA (Local Area Agreement) made up from a suite of National indicators.
4. The pilot merger aims to achieve a more effective and efficient approach to community safety which will benefit all partners but in particular both councils and the police. This includes the removal of duplication, pooling expertise and resources, joint approach to securing funding and achieving efficiencies.
5. An evaluation of the partnership which will include input from Government Office North West (GONW) will take begin in March 2011.
6. This report provides members of the Scrutiny Committee with an update on the progress of the partnership and also progress against the key actions.

Background

7. Following the review of the Crime and Disorder Act 2007, Crime and Disorder Reduction Partnerships (CDRPs) were required to produce a new type of Strategic Crime Assessment. These replaced the audits produced for the 2005 Community Safety Strategies.
8. In order to produce this new assessment in an economic and efficient manner, CDRPs in the Police Southern Division decided to work together and develop a

joint assessment to meet the needs arising in South Ribble, Chorley and West Lancashire.

9. The joint development of this new assessment led on to a consideration as to whether the CDRPs might be able to operate together at a strategic level whilst also improving local service delivery. All partners were consulted and there was strong support for a merger which partners considered would achieve a more efficient and effective approach and better use of partner resources.
10. Following detailed consideration of the options both the South Ribble and Chorley CDRPs decided to undertake a pilot merger which was supported by formal decisions from the cabinets of both councils. West Lancashire decided to remain as a stand alone CDRP.
11. The pilot merger of the Safer Chorley and South Ribble Partnership commenced in July 2008. The purpose of the partnership is to co-ordinate community safety work within South Ribble and Chorley and to identify priorities and strategic approaches in the following areas of work:
 - Crime and Disorder including acquisitive crime violent crime and criminal damage
 - Antisocial Behaviour
 - Substance misuse covering alcohol and drugs
 - Quality of life issues including primary and secondary fires and Road safety
 - Community cohesion
12. The Safer Chorley and South Ribble Partnership also act as the thematic partnership for the Chorley and South Ribble Local Strategic Partnerships and undertake responsibilities associated with this role.
13. The partnership is supported by an Officer Working Group, which is made up of key partners.
14. Through the merged partnership thematic actions groups have been identified and set up to work across both South Ribble and Chorley to cover the following themes from the strategic priorities.
 - Alcohol
 - Domestic Abuse
 - Positive Activities (focus on reducing Anti-social Behaviour/Criminal Damage etc.)
 - Vulnerable Households
 - Drugs/Joint Commissioning Group (JCG)
 - Prolific and other Priority Offenders (PPO)
 - Families First
 - Multi Agency Tasking and Co-ordinating (MATAC)
 - Multi Agency Licensing Tasking (MALT)
15. The structure of the CDRP has therefore been developed using an intelligence led approach.

Summary of Progress

Overview

16. Overall the partnership is making good progress.

Areas of Significant Progress / Achievement

- The pilot partnership is bringing about a number of benefits including a more effective and efficient way of working.
- Joint Community Safety Manager in post.
- Themed Action Groups established in priority areas.
- Governance arrangements established.
- Introduction of alcohol Consequences campaign.
- Respect Weeks of Action have taken place.
- External additional funding of £60k secured to support the Consequences campaign over Chorley and South Ribble £30k per geographic area.
- Sanctuary scheme continues to provide support to vulnerable people.
- Continued reduction in LAA target priorities Serious Acquisitive Crime and Assault with less serious injury.
- Positive results from the Place Survey, which includes a reduced perception of anti social behaviour in the borough.
- Multi agency action initiatives being carried out.

Areas of Concern

- Funding for the Independent Domestic Violence Advocates (IDVA) service is only currently available until March 2010.

Progress against highlighted pilot merger benefits

The joint approach has enabled a number of benefits including:

- **Shared posts** - a review of the staff structure to take into account the shared provision of a Community Safety Manager has enabled a more efficient way of working. The appointment of a shared analyst has enabled operational resources to be targeted more effectively with the post being funded through five partners contributing equal amounts.
- **Pooling of expertise, knowledge, skills and resources** - there are clear benefits to the pooling of expertise, knowledge, skills and resources. Some examples include an officer who has experience of funding applications leading on the preparation of bids to cover both boroughs, an officer who has specialist expertise of CCTV who is taking the lead on CCTV for both boroughs and one council providing a venue for key meetings whilst the other provides administrative support.
- **Shared approach to joint applications and bids for the funding of projects** - a shared approach to joint applications and bids for the funding of projects has enabled more effective use of staff time compared to the previous arrangements when time was spent by both CDRPs preparing separate bids. Also through the merger, the partnership is potentially in a stronger position to attract funds as a recent bid to GONW

resulted in the maximum award of £30k to each borough. Neighbouring CDRPs did not achieve the same level of success.

- **Reduction in duplication and the number of meetings attended by partners/agencies** - the merged partnership has significantly reduced duplication especially with regard to attending meetings. In some cases under the previous arrangements it was necessary for either two meetings or two officers to attend meetings whereas now only one is required. Whilst this is removing duplication by the two councils it is also beneficial to the partners/agencies which previously had to support two CDRPs and also helps to create capacity for tackling crime.
- **More efficient and effective working practices** - through the merged partnership there are opportunities to streamline processes, procedures and working arrangements. Examples include a shared partnership plan which is meeting the needs of both boroughs. This is a much more streamlined approach compared to the development and management of two separate plans. Arrangements have been developed for joint management of the partnership budgets and performance monitoring and reporting.
- **Learning** - the merged partnership has enabled learning to be shared between the partners/agencies and officers from both councils especially around an enhanced level of collaboration and cooperation, which has been essential to the success so far of the partnership.

Progress against the delivery of the CDRP action plan

17. See appendix 2

In addition to the above information a number of actions/initiatives and results can also be reported.

18. **A new joint partnership logo** has been designed by Runshaw College students and is now included on partnership documents and correspondence.
19. **Governance arrangements** have been established for the partnership including terms of reference for the Partnership (Responsible Authorities (Strategic) Group), Officer Working Group and thematic action groups such as Domestic Violence.
20. **Evidence from the 2008 Place Survey** Evidence from the 2008 Place Survey shows that the % of residents rating anti social behaviour as a problem in the borough is low at 13.6% putting Chorley in the 2nd quartile nationally. We are performing significantly better than the Lancashire and National average of 18.8% and 18.3% respectively.
21. The survey has also identified that 30.5% of residents in Chorley believe that the local council and police are dealing with local concerns about anti social behaviour. This puts Chorley in the upper quartile nationally.
22. **The alcohol Consequences campaign** to raise parents' awareness of the consequences of the excessive alcohol consumption by young people and where to seek advice in relation to their child was implemented last year and is still ongoing. The campaign was enhanced following a successful multi agency

bid to secure £30k of external funding to carry out activities around alcohol and young people in Chorley. A new leaflet is due to be launched and a dedicated website for the campaign is under development.

23. **A Responsible Alcohol Retailing Course** has been introduced in partnership with Runshaw College. If a retailer fails an alcohol sales test purchase i.e. selling to an under age person, they are given the opportunity to attend the course at the college. They have to fund the course as an alternative to receiving a fixed penalty ticket.
24. **A Face the Public Consultation Event** was held earlier this year which included presentations from all key partners around their work in community safety and was an opportunity for the public to ask the partners questions.
25. **The Substance Misuse Arrest Referral Pilot Project** commenced earlier this year. The project consists of alcohol and drug workers who provide referral, harm reduction advice and basic information and advice to offenders arrested due to alcohol and/or drug related offences the previous night.
26. **A number of ANPR Auto number plate recognition** initiatives have been carried out in the borough consisting of a number of different agencies working together to target defective and suspect vehicles. Typical agencies and partners involved in an operation of this type would be the Traffic Police, VOSA, Trading Standards, SRBC Community Safety, Benefits and Licensing.
27. **An annual refresh of the Strategic Assessment** has been carried out this year and been used to inform the joint partnership plan currently in place. The strategic assessment is a strategic and high level review which identifies the key issues within the borough which affect community safety. The refresh of the strategic assessment which will cover financial year 2011 to 2012 is currently underway and will use a range of multi agency information and data to form an intelligence led approach to the continued identification of strategic priorities for the CDRP.
28. **A shared Crime Car** has been introduced into South Ribble and Chorley. The vehicle operates in the evenings and nights and provides a rapid response to suspected vehicle crime and burglaries. It also targets suspicious vehicles from outside the area as travelling criminals is a problem for both boroughs.
29. **Operation Julius** has been in place throughout the summer . This initiative is a burglary reduction operation as burglary normally increases during the summer months due to more property being left insecure. Operation Contego has succeeded this operation and is currently getting underway across the borough.
30. **The launch of Business Watch** in Chorley Town Centre during September 2009 will formalise the previous radio/photograph scheme operated across this area. The proposed extension of participants involved in the scheme will give better coverage across the Town Centre as a whole.
31. **Launch of the Open Spaces Watch** during October 2009 with large number of partnership agencies involved in the identification of problems including anti-social behaviour, crimes, fly-tipping etc., in the vast amount of open spaces that the area has. The first strand of this project was the Dog Watch where

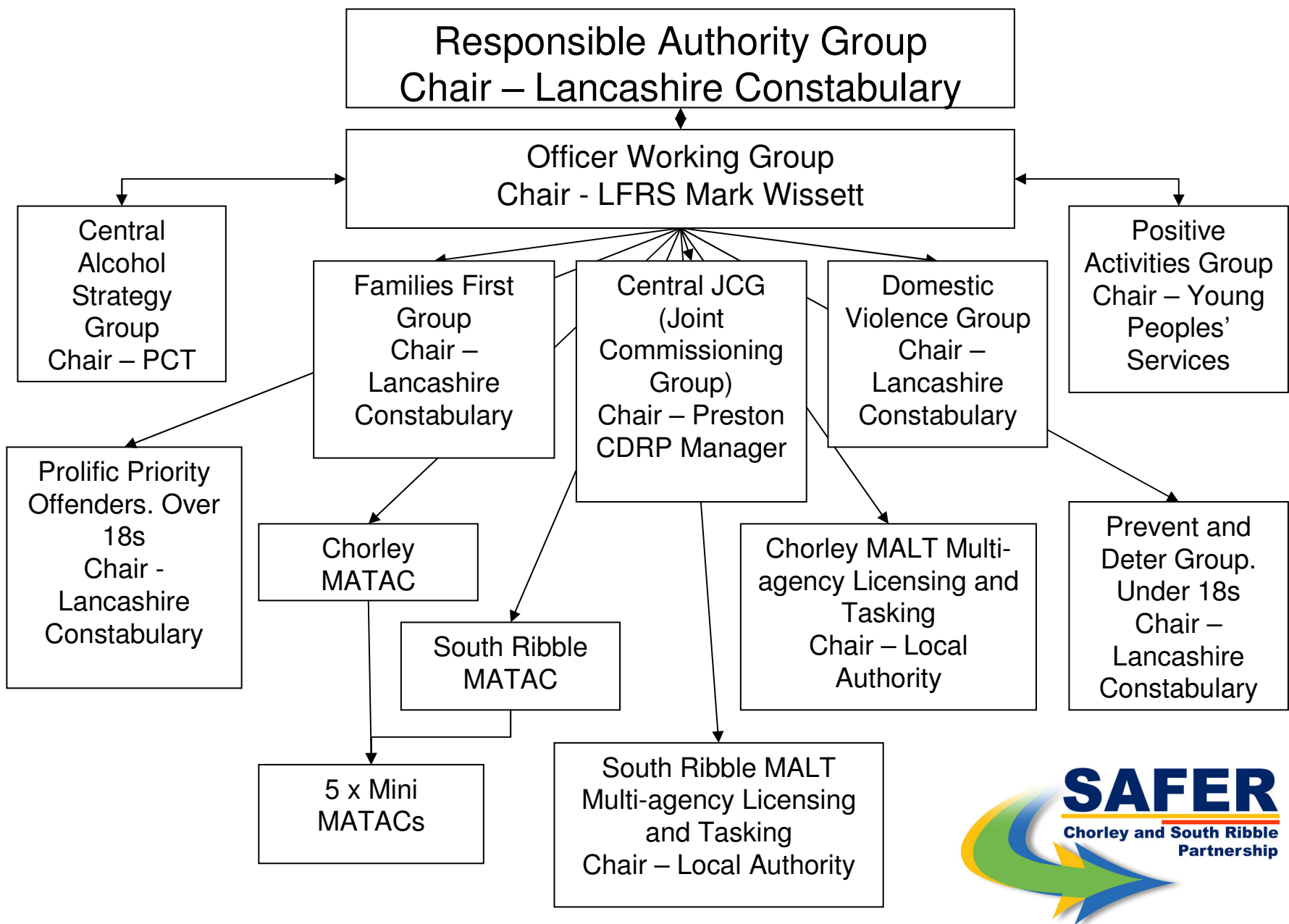
visitors to Hillcrest Animal Hospital organised Dog Show in September were approached to join.

32. **Crime Prevention days** which have included the replacement of tamperproof screws for number plates, fitted by the A.A., together with the distribution of crime prevention advice across the Chorley area.
33. **The Sanctuary Scheme** provides home safety for the victims of domestic abuse and vulnerable victims of domestic burglary. The scheme operates in both South Ribble and Chorley. During 2008/9 there were 46 referrals in South Ribble and in 2009/10 there have been 26 to date.
34. **A pilot training programme for the Witness Service Volunteer service** has been developed to enable them to safely support victims of domestic violence at court. The training was piloted in July and was very well received with discussions now being held for it to be rolled out across Lancashire.
35. **A Multi Agency Risk Assessment Conference (MARAC)** is held every month with statutory and voluntary agencies to discuss the support and assistance for very high-risk victims of domestic violence. During 2008/9 the MARAC considered cases for 132 adults, which also included 235 children, which were identified as 'very high risk' cases of domestic violence. To date in 2009/10 there have been cases for a further 48 adults which also included 93 children. Through the MARAC, training has been provided to 70 front line officers.
36. **The Independent Domestic Violence Advocates (IDVA)** service offers crisis intervention to domestic violence victims who are at very high risk of serious harm or murder and to support victims throughout the duration of their case, acting as an advocate/advisor on both criminal and civil court processes, agency responsibilities and playing a crucial and pivotal role on the MARAC. Following increased efforts to encourage victims to come forward there is now an increased level of reports. During 2008/9 the IDVA service received 269 referrals 42% are referrals for Chorley . The service is funded by the Safer Chorley and South Ribble Partnership and the Ministry of Justice. The service faces a number of challenges as the current level of referrals is already unsustainable and funding is only available from the Ministry of Justice until March 2010.

Conclusion

37. It is considered that the pilot Safer Chorley and South Ribble Partnership is making good progress. A business improvement plan has been formulated to ensure that the CDRP continues to improve and develop. This plan will be delivered by March 2010 and will in part be used to evaluate the success of the pilot merged CDRP.
38. The partnership is due to commence an evaluation to inform the way forward and to determine whether the pilot should be recommended to become a permanent arrangement. This will require Home Office approval.

This page is intentionally left blank



This page is intentionally left blank

Crime information

1. Crime is upon Chorley Borough despite performing well against our LAA targets. There has been an overall increase in fraud in the Borough compared to this time last year. Fraud by false representation (cheque, plastic card and online banking accounts) has increased by 71.4%. Furthermore, fraud by false representation (other frauds) has increased by 200%.
2. In terms of why our 'all crime' figures are increasing this can generally be explained by increases in certain types of acquisitive crime compared against this time last year. For instance bicycle theft has increased by 140%, theft from vehicles has increased by 39.3%, shoplifting has increased by 35.6% and criminal damage (not including to vehicles) has gone up by 29.3%. Although there have been increases in certain types of acquisitive crime, robbery and violent crime are not increasing.
3. The main reason for some of the individual categories of crime showing increases is that crime in Chorley has been at an all time low, following the 26% reduction between 2005 and 2008. Therefore, as we have few crimes, small increases in numbers can lead to large percentage changes.

Chorley CDRP Family Comparative Incidence for crime

4. The Chorley CDRP area is in a Family of 15 authorities of most similarity. The below information is taken from IQuanta and compares Chorley CDRP area against the other 14 authorities within its Most similar group (MSG). The time period covered is the latest information available and covers the 2nd quarter of financial year 09/10 1st of July – 30th September 2009.
5. What is IQuanta? It is a means by which 'Forces and authorities can view reports for their own force and its units, including aggregated data for their Most Similar Forces and their BCU and CDRP families.
6. The other authorities in Chorley CDRPs group are
 - East Northamptonshire
 - South Ribble
 - Wyre
 - Newcastle Under Lyme
 - Vale of Glamorgan
 - Highpeak
 - Warrington
 - Swale
 - Basildon
 - Thurrock
 - Reddich
 - Wyre Forrest
 - Kettering
 - Wellingborough
7. **All Crime**
There is no all crime target set for Chorley CDRP area
Chorley is in 4th place within in our comparative family group

8. **NI 20 – Assault with less serious injury**
 Target 1.5% reduction to be achieved during financial year 09/10 against 08/09 figures.
 08/09 Baseline 619 crimes
 09/10 Target 610 crimes
 Actual year to date performance up to the second quarter 09/10 297 crimes equating to –2.75% reduction
 Chorley is in 4th place within in our comparative family group

9. **NI 16 – Serious Acquisitive Crime**
 Target 0.33% reduction 09/10 to be achieved during financial year 09/10 against 07/08 figures.
 07/08 Baseline 839 crimes
 09/10 Target 836 crimes
 Actual year to date second quarter 361 crimes equating to a –14% reduction
 Chorley is in 4th place within in our comparative family group

10. **Criminal damage**
 There is no criminal target set for Chorley CDRP area
 Chorley is in 3rd place within in our comparative family group

11. **Most Serious Violence**
 There is no most serious violent crime target set for Chorley CDRP area
 Chorley is in 6th place within in our comparative family group

12. Should Cllrs or members of the community wish to view crime related information for the area they live they can do this visiting the below website

<http://www.saferlancashire.co.uk/statistics/>

13. Chorley CDRP
 Current position as of 9th of November 2009

Category	01.10.08 – 31.10.08	01.10.09 – 31.10.09	% Change	YTD 08/09	YTD 09/10	YTD % Change
All Crime	521	527	+1.2%	3607	3719	+3.1%
Serious Acquisitive Crime (NI16)	68	75	+10.3%	455	448	-1.5%
Burglary Dwelling	23	35	+52.2%	116	144	+24.1%
Vehicle Crime	43	38	-11.6%	323	293	-9.3%
Robbery	2	2	=	16	11	-31.3%
All Violent Crime	124	116	-6.5%	883	862	-2.4%
Serious Violent Crime	6	8	+33.3%	40	44	+10.0%
Assault with Less Serious Injury (NI20)	52	48	-7.7%	387	360	-7.0%

Domestic Violent Crime	Related	31	17	-45.2%	205	177	-13.7%
Criminal Damage (inc arson)		123	106	-13.8%	819	847	+3.4%
Anti Social Behaviour		726	657	-9.5%	5653	4903	-13.4%

This page is intentionally left blank

	21 May	22 Jun	10 Aug	1 Sept	28 Sept	9 Nov	1 Dec	18 Jan	15 Feb	22 Mar
<u>Holding the Executive to account</u>										
Executive Leader										
Policy and Performance	MS PR CP		MS PR CP			MS PR CP		BS	MS PR CP	
Neighbourhoods	MS		MS			MS			MS	
Resources	MS		MS			MS			MS	
Business	MS		MS			MS			MS	
People	MS		MS			MS			MS	
Sustainable Communities Act		*								*
Affordable Housing Task Group - Service Improvement Plan		*								
Updated Attendance Policy Statement			*							
Work undertaken by Groundwork				*						
ICT services for Members				*						
New Scrutiny powers					*					
Performance of key partnerships						*				
Value for Money review of Support Services								*		
Review of free swimming scheme								*		
Closed church yards policy									*	
Local Development Framework								*		
Forward Plan	*	*	*	*	*	*	*	*	*	*
Executive Cabinet agenda	*	*	*	*	*	*	*	*	*	*

Policy Development and Review of Council Services (Task and Finish Groups)

Highways		S	S	S	C	C	R	R		F
Town Centre Regeneration			S	S	C	C	C	C	R	R
Neighbourhood Working					M				M	
Efficiency Gains								M		
Streetscene Issues		F						M		

<u>Crime and Disorder</u>							*			
<u>Health</u>										

External Scrutiny

Chorley Community Housing			F						M	
Affordable Housing (South Ribble and Preston)						R			F	
Chorley Partnership		R				F				

Other

Work Programme	*	*	*	*	*	*	*	*	*	*
Review of the Year										*
Annual Report	*									

Key:

Holding the Executive to account

MS Business plan monitoring statements
 PR Performance report and
 CP Chorley Partnership performance report
 BS Budget scrutiny

Policy Development and Review of Council Services and External Scrutiny

S Scoping
 C Collecting and considering evidence
 R Report
 F Feedback and action
 M Monitoring

This page is intentionally left blank

CHORLEY BOROUGH COUNCIL FORWARD PLAN FOR THE FOUR MONTH PERIOD 1 DECEMBER 2009 TO 31 MARCH 2010

1. This Forward Plan sets out the details of the 'key' and other major decisions which the Council expects to take during the next four month period. The Plan is rolled forward every month and is available to the public 14 days before the beginning of each month.
2. A 'Key' Decision is defined as:
 - 2.1 Any executive decision which is likely to result in the Council incurring significant expenditure or the making of savings where there is:
 - a change in service provision that impacts upon the service revenue budget by £100,000 or more; or
 - a contract worth £100,000 or more; or
 - a new or unprogrammed capital scheme of £100,000 or more.
 - 2.2 Any executive decision which will have a significant impact in environmental, physical, social or economic terms on communities living or working in two or more electoral wards. This includes any plans or strategies which are not within the meaning of the Council's Policy Framework set out in Article 4 of the Council's Constitution.
 - 2.3 Under the Access to Information Procedure Rules set out in the Council's Constitution, a 'Key' Decision may not be taken, unless:
 - it is published in the Forward Plan;
 - five clear days have lapsed since the publication of the Forward Plan; and
 - if the decision is to be taken at a meeting of the Executive Cabinet, five clear days notice of the meeting has been given.
 - 2.4 The law and the Council's Constitution provide for urgent key decisions to be made, even though they have not been included in the Forward Plan in accordance with Rule 18 (General Exception) and Rule 19 (Special Urgency) of the Access to Information Procedure Rules.
3. The Forward Plan has been extended to now include details of any significant issues to be considered by the Executive Cabinet, full Council and Overview and Scrutiny Committee. It is hoped that this will better meet the needs of both elected Members, Officers and the public.
4. Anyone wishing to make representations about any of the matters in the schedule below may do so by contacting the officer listed. Copies of the Council's Constitution and agenda and minutes for all meetings of the Council may be accessed on the Council's website: www.chorley.gov.uk. Most meetings of the Council are open to the public and meeting dates are also on the Council's website.

Donna Hall
Chief Executive
Publication Date: 20 November 2009

Details of the Decision to be taken	Decision to be taken by	Relevant Portfolio Holder	Earliest Date decision can be taken	Proposed Consultees	Method(s) of Consultation	Documents to be considered by Decision taker	Representation s may be made to the following officer by the date stated
EXECUTIVE CABINET DECISIONS							
Determination of response to Final report on the Best Value Review of Support Services	Executive Cabinet	Executive Member (Resources)	3 Dec 2009	Strategy Group; Internal Stakeholders	Draft report to be provided to consultees for consideration.	Draft Final report on the Value for Money Review	Assistant Chief Executive (Business Transformation) Tel: 01257 515480 gary.hall@chorley.gov.uk Monday, 30 November 2009
Approval of proposed Designated Public Places Order for Chorley Town Centre and Astley Park for consultation	Executive Cabinet	Executive Member (Neighbourhoods)	3 Dec 2009	Police, Town Centre Forum, Premises Licence Holders, Residents	Draft Order to be supplied to the consultees	Report and Draft Order	Corporate Director (Neighbourhoods) Tel: 01257 515720 ishbel.murray@chorley.gov.uk Monday, 30 November 2009

Details of the Decision to be taken	Decision to be taken by	Relevant Portfolio Holder	Earliest Date decision can be taken	Proposed Consultees	Method(s) of Consultation	Documents to be considered by Decision taker	Representations may be made to the following officer by the date stated
Approval of Corporate Debt Management and Recovery Policy	Executive Cabinet	Executive Member (Resources)	3 Dec 2009	Strategy Group	Draft Policy to be supplied to consultees	Draft Policy Document	Assistant Chief Executive (Business Transformation) Tel: 01257 515480 gary.hall@chorley.gov.uk Monday, 30 November 2009
Approval of Draft Private Sector Housing Assistance Policy, 2010 - 2012 for consultation	Executive Cabinet	Executive Member (Business)	3 Dec 2009	Strategy Group, Registered Social Landlords	Draft Policy to be supplied to the consultees	Draft Policy Document	Assistant Chief Executive (Policy and Performance) Tel: 01257 515323 lesley-ann.fenton@chorley.gov.uk Monday, 30 November 2009

Details of the Decision to be taken	Decision to be taken by	Relevant Portfolio Holder	Earliest Date decision can be taken	Proposed Consultees	Method(s) of Consultation	Documents to be considered by Decision taker	Representation s may be made to the following officer by the date stated
Authority to review the current arrangements in relation to the South Lancashire Home Improvement Agency	Executive Cabinet	Executive Member (Business)	3 Dec 2009	Current partners in the South Lancashire Home Improvement Agency	Draft proposals to be supplied to the consultees	Confidential report on draft proposals	Assistant Chief Executive (Policy and Performance) Tel: 01257 515323 lesley-ann.fenton@chorley.gov.uk Monday, 30 November 2009
Determination of Senior Management Restructure Proposals following consultation process	Executive Cabinet	Executive Leader	12 Nov 2009	Strategy Group; Internal Stakeholders (eg Staff, Trade Unions).	Report on draft proposals to be supplied to consultees	Confidential report on draft restructure proposals	Chief Executive Tel: 01257 515104 donna.hall@chorley.gov.uk Monday, 30 November 2009
COUNCIL DECISIONS							
Review of the Council's Constitution	Council	All Portfolio Holders	15 Dec 2009	Political Group Leaders	The item was deferred at the last Council meeting for consultation with the Political Groups	Council report showing proposed revisions to the Constitution	Corporate Director of Governance andrew.docherty@chorley.gov.uk Tuesday, 8 December 2009

Details of the Decision to be taken	Decision to be taken by	Relevant Portfolio Holder	Earliest Date decision can be taken	Proposed Consultees	Method(s) of Consultation	Documents to be considered by Decision taker	Representations may be made to the following officer by the date stated
Proposed changes to Polling Stations	Council	Executive Member (Resources)	15 Dec 2009	Political Group Leaders	Report on draft proposals to be supplied to consultees	Report on draft proposals	Corporate Director of Governance andrew.docherty@chorley.gov.uk Tuesday, 8 December 2009
OVERVIEW AND SCRUTINY COMMITTEE DECISIONS							
Approval of Protocol for the scrutiny of crime and disorder matters	Overview and Scrutiny Committee	Executive Member (Neighbourhoods)	1 Dec 2009	N/A	N/A	Draft Protocol	Corporate Director of Governance andrew.docherty@chorley.gov.uk Friday, 27 November 2009
Initial Scrutiny of the Safer Chorley and South Ribble Partnership	Overview and Scrutiny Committee	Executive Member (Neighbourhoods)	1 Dec 2009	N/A	N/A	Summary report on the work of the Partnership	Corporate Director (Neighbourhoods) Tel: 01257 515720 ishbel.murray@chorley.gov.uk Friday, 27 November 2009

Details of the Decision to be taken	Decision to be taken by	Relevant Portfolio Holder	Earliest Date decision can be taken	Proposed Consultees	Method(s) of Consultation	Documents to be considered by Decision taker	Representations may be made to the following officer by the date stated
Endorsement of final report of Highways Scrutiny Task Group	Overview and Scrutiny Committee	Executive Member (Neighbourhoods)	18 Jan 2010	District Partnership Officer (Lancashire County Council)	Draft report supplied to consultee	Draft report of outcome of the scrutiny review	Corporate Director (Neighbourhoods) Tel: 01257 515720 ishbel.murray@chorley.gov.uk Monday, 11 January 2010
Endorsement of final report of Town Centre Vitality Scrutiny Task Group	Overview and Scrutiny Committee	Executive Member (Business)	15 Feb 2010	District Partnership Officer (Lancashire County Council)	Draft report to be supplied to the consultee	Draft report on the outcome of the scrutiny review	Corporate Director (Business) Tel: 01257 515285 jane.meek@chorley.gov.uk Monday, 8 February 2009